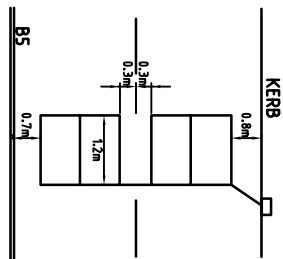
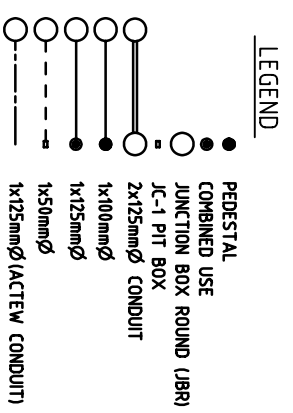
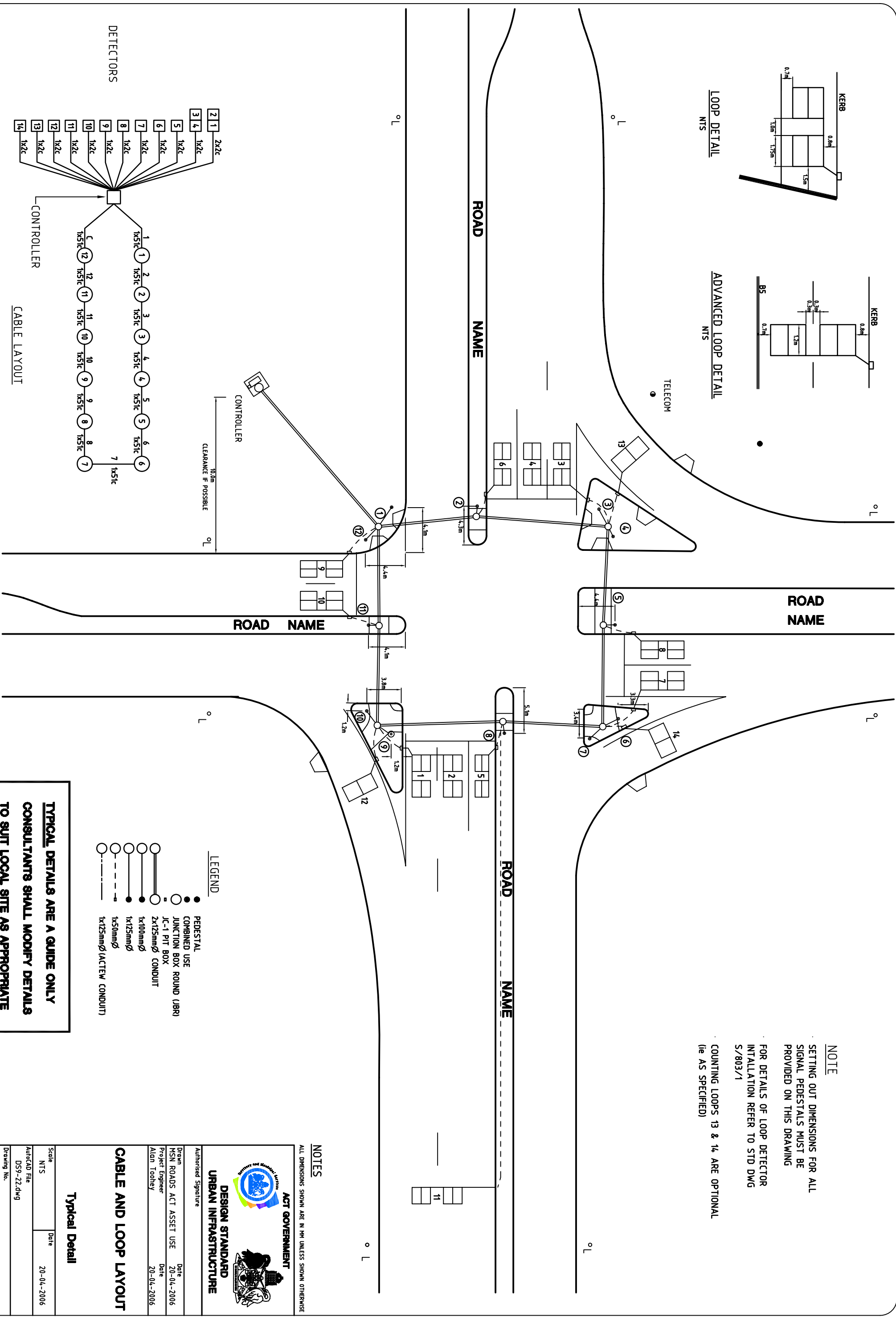


LOOP DETAIL  
NTS



ADVANCED LOOP DETAIL  
NTS

**NOTE**  
SETTING OUT DIMENSIONS FOR ALL SIGNAL PEDESTALS MUST BE PROVIDED ON THIS DRAWING  
FOR DETAILS OF LOOP DETECTOR INSTALLATION REFER TO STD DWG S/803/1  
COUNTING LOOPS 13 & 14 ARE OPTIONAL (ie AS SPECIFIED)



LEGEND

**TYPICAL DETAILS ARE A GUIDE ONLY  
CONSULTANTS SHALL MODIFY DETAILS  
TO SUIT LOCAL SITE AS APPROPRIATE**

**NOTES**  
ALL DIMENSIONS SHOWN ARE IN MM UNLESS SHOWN OTHERWISE



Authorised Signature	Date
Drawn MSN ROADS ACT ASSET USE	20-04-2006
Project Engineer Aidan Toohy	20-04-2006

**CABLE AND LOOP LAYOUT**

**Typical Detail**

Scale NTS	Date 20-04-2006
AutoCAD File DS9-22.dwg	
Drawing No. DS9-22	