

# Did you know?

**That up to 36% of accidents on unsealed roads in the Crookwell, Gunning and Yass Shires, involved ACT Motorists.**



**Gravel roads** are often narrow and winding with potholes and corrugations!

Dusty conditions can reduce your visibility!

Bends and sharp curves with a build up of loose stones can be dangerous!

Always drive to the condition of the **Gravel road**, which is often not necessarily the sign posted speed limit!



**So  
Slow Down**

**On  
Gravel  
Roads...**

# Drive to the Conditions .....



**Oh, and remember**

**Look out for!**

**Wandering Stock**

**Wildlife**

**Potholes**



**Large Transport**

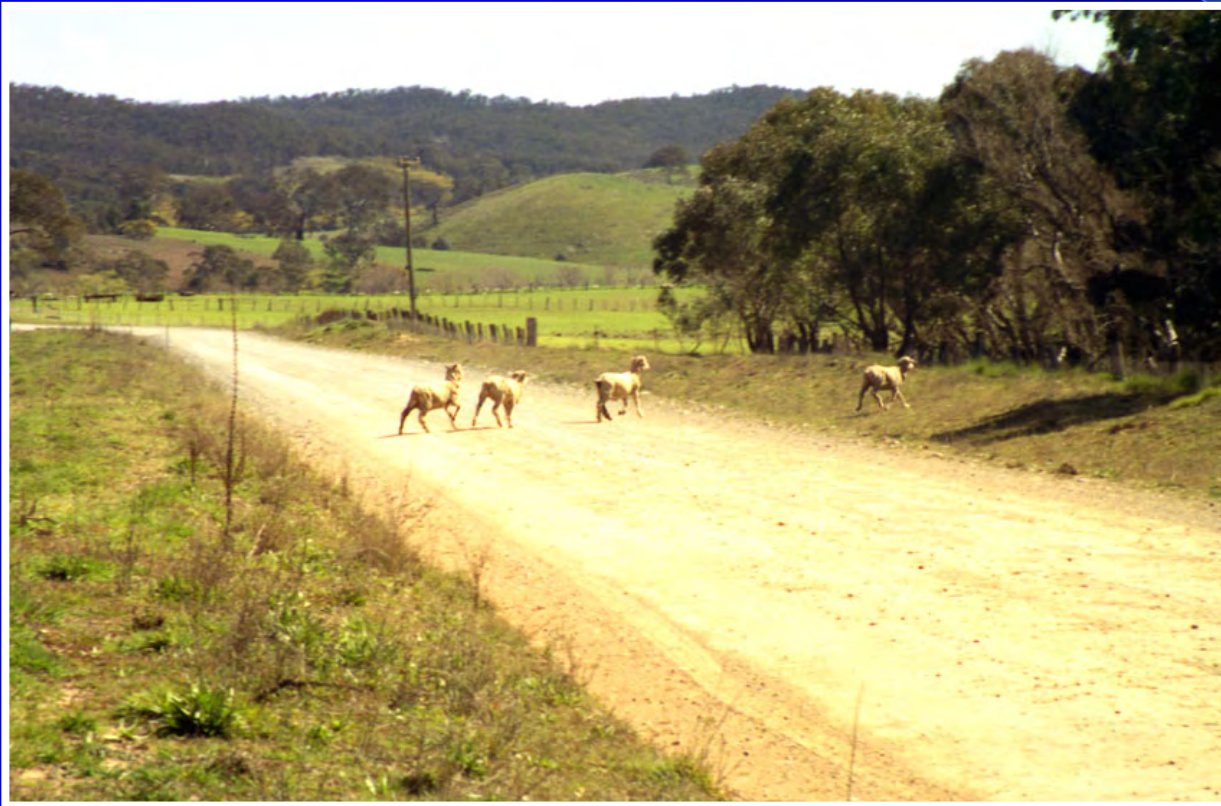
**Railway Crossings**

**Farm Machinery**

**and try to limit your driving at night to a minimum...**

**At all times**

**be alert for stock and wildlife**





**Please  
slow  
down**



**On Gravel Roads**

**A Road Safety  
initiative of the  
Crookwell,  
Gunning and Yass  
Shire Councils  
supported by the  
NRMA - ACT Road  
Safety Trust**

