

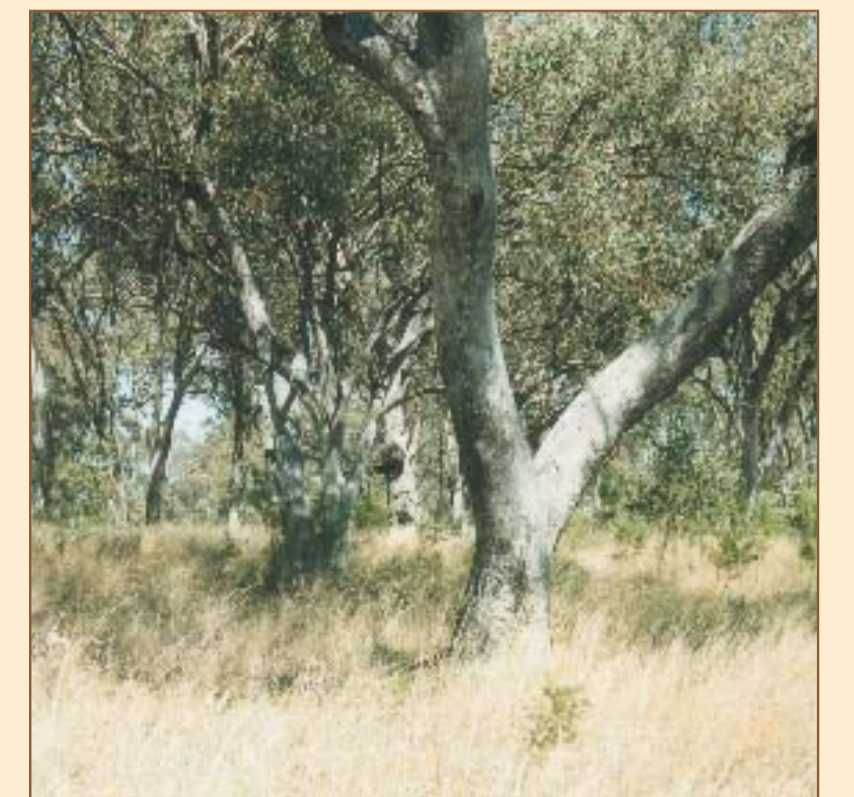
TURALLO NATURE RESERVE—THEMEDA GRASSLAND



GOOROYARROO ACT NATURE RESERVE—YELLOW BOX-RED GUM GRASSY WOODLAND



MT AINSLIE NATURE RESERVE—YELLOW BOX-RED GUM GRASSY WOODLAND



MANILLA, NSW—WHITE BOX GRASSY WOODLAND

# GRASSLANDS AND GRASSY WOODLANDS OF THE ACT AND NSW





## WOODLAND & GRASSLAND WILDFLOWERS featured in the poster<sup>1</sup>

Number	Common name	Scientific name	When in flower	Habitat	Status
1	ACT Spider Orchid	<i>Arachnorchis actensis</i>	spring	grassy woodland in a Canberra Nature Park reserve	rare
2	Austral Bears-ear	<i>Cymbonotus lawsonianus</i>	early spring	grasslands & grassy woodlands	common
3	Billy Buttons	<i>Craspedia variabilis</i>	early spring to early summer	damp areas of grasslands & grassy woodlands	declining
4	Australian Bindweed	<i>Convolvulus erubescens</i>	spring & summer	grasslands & grassy woodlands	common
5	Bitter Cryptandra	<i>Cryptandra amara</i>	winter	edges of woodlands	declining
6	Black-anthered Flax Lily	<i>Dianella revoluta</i>	spring	grassy woodland	declining
7	Blakely's Red Gum	<i>Eucalyptus blakelyi</i>	late winter to mid-summer	low lying areas of woodlands	declining
8	Blue Devil	<i>Eryngium rostratum</i>	spring to mid-summer	grasslands & grassy woodlands	declining
9	Blue Grass-lily	<i>Caesia calliantha</i>	spring	damp areas of grasslands & grassy woodlands	rare
10	Bulbine Lily	<i>Bulbine bulbosa</i>	spring	grasslands & grassy woodlands	declining
11	Bush Pea	<i>Pultenaea procumbens</i>	spring	woodlands on shallow soil	common
12	Button Wrinklewort	<i>Rutidosis leptorhynchoides</i>	late spring & summer	restricted to a small number of woodland areas	endangered
13	Cauliflower Bush	<i>Cassinia longifolia</i>	late spring to early summer	woodlands on shallow soil	common
14	Chocolate Lily	<i>Dichopogon fimbriatus</i>	spring to early summer	woodlands & grasslands	declining
15	Common Bluebell	<i>Wahlenbergia communis</i>	spring to autumn	woodlands & grasslands	common
16	Common Buttercup	<i>Ranunculus lappaceus</i>	spring & summer	damp areas of woodlands & grasslands	declining
17	Common Sundew	<i>Drosera peltata</i>	spring	wet grassy areas	common
18	Creamy Candles	<i>Stackhousia monogyna</i>	early spring	woodlands & grasslands	declining
19	Early Nancy	<i>Wurmbea dioica</i>	late winter to early spring	woodlands & grasslands	uncommon
20	Early Wattle	<i>Acacia genitifolia</i>	winter	woodlands on shallow soils	common
21	Finger Flower	<i>Cherianthera cyanea</i>	spring	grassy woodland	rare
22	Flax-leaved Rice-flower	<i>Pimelea linifolia</i>	spring & summer	grassy woodland	uncommon
23	Common Fringe-lily	<i>Thysanotus tuberosus</i>	spring & autumn	grassy woodland	declining
24	Golden Moths	<i>Diuris chryseopsis</i>	spring	moist areas in grassland & grassy woodland	declining
25	Grey Guinea Flower	<i>Hibbertia obtusifolia</i>	spring	woodland	common
26	Hoary Sunray	<i>Leucochrysum albicans</i>	spring & summer	grassy woodland & grassland	endangered
27	Kangaroo Grass	<i>Themeda australis</i>	late spring to early summer	grassy woodland & grassland	common
28	Leafy Daisy	<i>Brachyscome rigidula</i>	spring & summer	woodlands & grasslands	declining
29	Milkmaids	<i>Burchardia umbellata</i>	late spring	grassy woodlands	declining
30	Native Geranium	<i>Ceranium solanderi</i>	late winter to early summer	woodlands & grasslands	common
31	Narrow-leaved New Holland Daisy	<i>Vittadinia muelleri</i>	spring & summer	woodlands & grasslands	common
32	Old Man's Beard	<i>Clematis microphylla</i>	spring	woodlands	declining
33	Parson's Bands	<i>Eriochilus cucullatus</i>	autumn	woodlands	declining
34	Pink Fingers	<i>Caladenia carnea</i>	spring	woodlands	uncommon
35	Poa Tussock	<i>Poa sieberiana</i>	spring & summer	grassy woodlands & grasslands	common
36	Purple-Violet	<i>Viola betonicifolia</i>	spring & summer	moist grassy woodland	declining
37	Scaly Buttons	<i>Leptorhynchus squamatus</i>	spring	grassy woodland & grasslands	common
38	Scrambled Eggs	<i>Goodenia pinnatifida</i>	spring & summer	grassy woodlands & grasslands	declining
39	Silver Wattle	<i>Acacia dealbata</i>	late winter to spring	grassy woodland	common
40	Slender Sun Orchid	<i>Thelymitra pauciflora</i>	late winter to spring	woodland	uncommon
41	Small Purple Pea	<i>Swainsona recta</i>	spring	grassland & grassy woodland	rare, endangered
42	Sticky Everlasting	<i>Bracteantha viscosa</i>	late spring & summer	grassy woodland	uncommon
43	A speargrass	<i>Austrostipa</i> species	late spring to early summer	woodlands & grasslands	common
44	Tiger Orchid	<i>Diuris sulphurea</i>	spring	woodlands on shallow soils	uncommon
45	Twining Glycine	<i>Glycine clandestina</i>	spring & summer	woodlands	uncommon
46	Vanilla Lily	<i>Arthropodium milleflorum</i>	late spring	grassy woodland	declining
47	A wallaby grass	<i>Austrodanthonia</i> species	spring & summer	grassy woodlands & grasslands	common
48	Yellow Box	<i>Eucalyptus melliodora</i>	variable	grassy woodland	common
49	Yellow Buttons (pale leaved form)	<i>Chrysocephalum apiculatum</i>	spring & autumn	grassy woodlands & grasslands	common
50	Yellow Rush Lily	<i>Trioryne elatior</i>	late spring & summer	grassy woodland & grassland	common
51	Yellow Buttons (dark leaved form)	<i>Chrysocephalum apiculatum</i>	spring & autumn	grassy woodlands & grasslands	common

<sup>1</sup> Some of these wildflowers are also found in open forest.

## WOODLAND & GRASSLAND WILDLIFE featured in the poster

Letter	Common name	Scientific name	Distribution	Threatened species code
A	Diamond Firetail	<i>Stagonopleura guttata</i>	SE mainland Australia	vulnerable
B	Golden Sun Moth	<i>Synemon plana</i>	small no. of Wallaby Grass sites	endangered
C	Grassland Earless Dragon	<i>Tympanocryptus pinguicolla</i>	small no. of grassland sites	endangered
D	Scarlet Robin	<i>Petroica multicolor</i>	SE Australia	declining
E	Shingle-back skink	<i>Trachydosaurus rugosus</i>	arid & semi-arid areas of SE Australia	declining

### Acknowledgements

Original artwork by Helen Fitzgerald. 2003 Wildlife and Botanical Artist. Queanbeyan, NSW  
 Text prepared by Toni McLeish (DEC), Lois Padgham (EnvACT), Rainer Rehwinkel (DEC), Sarah Sharp (EnvACT), Steve Taylor (EnvACT) and Jo Pillingier (EnvACT)

### Photographers

Turallo Nature Reserve—Themeda Grassland: Rainer Rehwinkel  
 Gooroyarroo ACT Nature Reserve—Yellow Box—Red Gum Grassy Woodland: Dave Whitfield, ACT Parks and Conservation  
 Mt Ainslie Nature Reserve—Yellow Box—Red Gum Grassy Woodland: John Baker  
 Manilla, NSW—White Box Grassy Woodland: Toni McLeish

### References

Eddy D., Mallinson D., Rehwinkel R. and Sharp S. 1998 *Grassland Flora—a field guide for the Southern Tablelands (NSW & ACT)*, Env. ACT, NPWS, WVE, SMA, ANBG, NHT, DLWC, Canberra, ACT

### Further information

Walker K., Burrows G. and McMahon L. 2001 *Bidgee Bush*, GA, CSU, Bushcare, EA, MBCM, DF Landcare group, Canberra, ACT  
 McIntyre S., McIvor J.G. and Heard K.M. 2002 *Managing and Conserving Grassy Woodlands*, CSIRO, Collingwood, Victoria  
 Environment ACT 2003 *Grassy Woodlands: Natural Habitats of the ACT – Teacher Resource Book*, Environment ACT, Canberra, ACT  
 National Parks Association of the ACT. 1983 *Native Trees of the ACT – Field Guide* National Parks Association of the ACT, Canberra  
 ACT Government. March 2004 *Woodlands for Wildlife: ACT Lowland Woodland Conservation Strategy (Action Plan No. 27)* (Environment ACT, Canberra)

### Website addresses

www.environment.act.gov.au  
 www.nationalparks.nsw.gov.au  
 www.environment.act.gov.au/nativeplantsandanimals/woodlandstrategy.html  
 www.deh.gov.au/biodiversity/toolbox/educational-material.html  
 www.anbg.gov.au/education  
 www.deh.gov.au/education/activities/index.html  
 www.biodiversity.csiro.au/index.htm  
 www.austmus.gov.au/biodiversity/factsheets.htm  
 www.abc.net.au/science/scribblygum/

## GRASSLANDS AND GRASSY WOODLANDS OF THE ACT AND NSW

### What are grasslands and grassy woodlands?

- Grasslands are treeless or sparsely treed landscapes where grasses dominate the groundlayer and there is a diversity of native wildflowers, referred to as 'forbs'.
- Grasslands are found in the lowest parts of the landscape (mostly on lower slopes or lower undulating hills) where cold air drainage and geological characteristics limit the growth of trees.
- Grassy woodlands contain trees where the crowns are clearly separated.
- Grassy woodlands contain few shrubs and the groundlayer is dominated by native grasses and may contain a diversity of forbs.
- Shrubby woodlands are found on slopes where the soils are stony and shallow.

- Many threatened plant species including the Button Wrinklewort, Tarengo Leek Orchid, Small Purple Pea, Hoary Sunray and Yass Daisy are found in grassy landscapes.
- Grasslands and woodlands provide a habitat for threatened animals including the Hooded Robin, Diamond Firetail, Grassland Earless Dragon and Golden Sun Moth.
- Many other grassland and woodland species are declining, including the Bearded Dragon, Shingle-back Skink, Key's Matchstick Grasshopper, Flame Robin and Scarlet Robin.

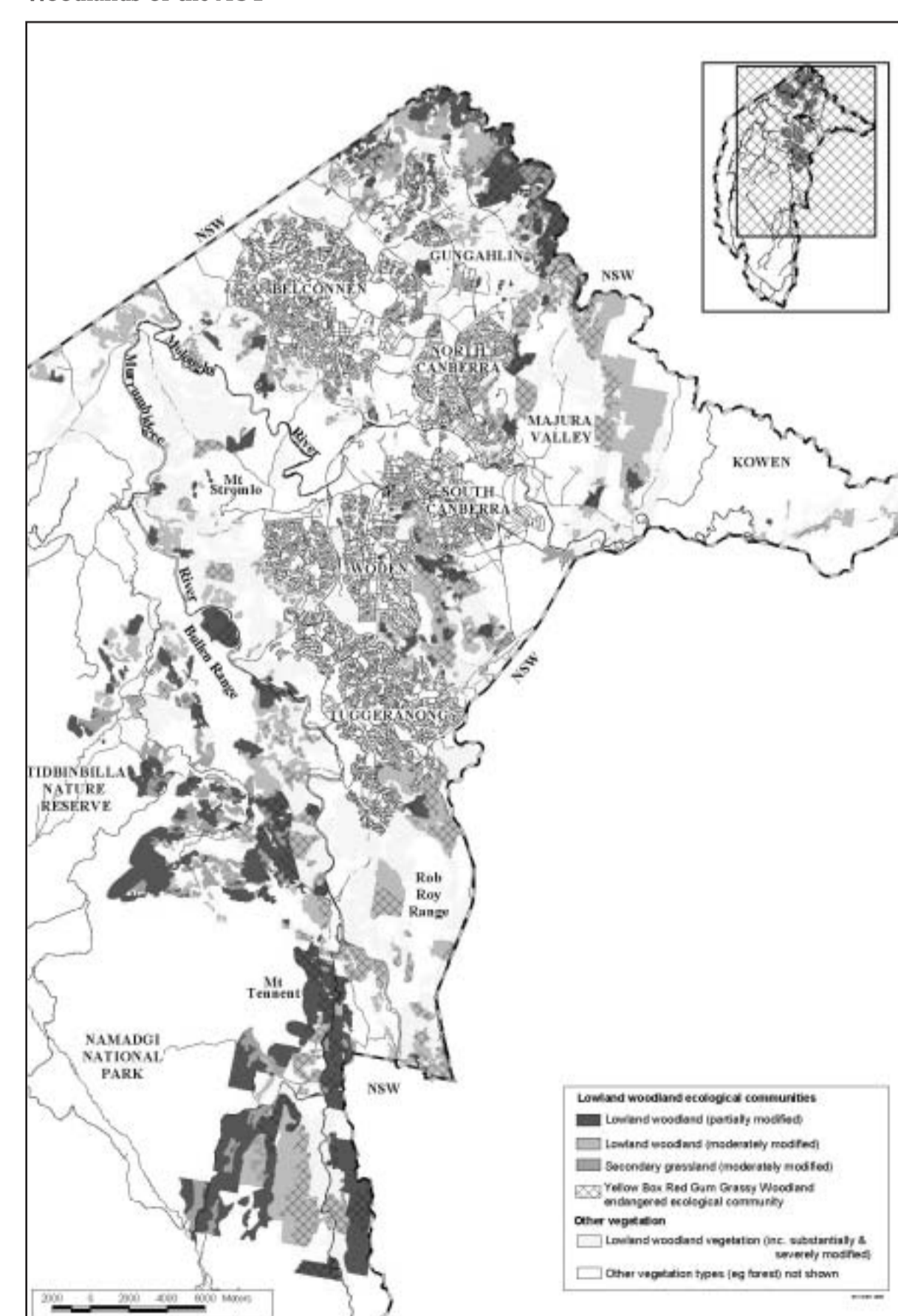
### What are we doing about it?

- Grassland and Box-Gum Woodland communities are listed as endangered ecological communities in the ACT, NSW and nationally.
- There are plans that guide the recovery of the threatened species and communities.
- Conservation measures such as protection in reserves or management to increase diversity are being applied.
- Threats are being controlled.
- Information is being provided to help the community understand better this important part of our natural heritage.

### Grasslands and Box-Gum Woodlands of NSW



### Woodlands of the ACT



- The area of land occupied by these grassy ecosystems has declined and their biodiversity has deteriorated.
- Diverse grassy woodlands and grasslands are rare because they occupy land favoured by agriculture and development.
- Woodlands and grasslands are subject to ongoing threats including clearing for development, firewood collection, rock removal and weed invasion.

