

## PART C - Knowing the road rules

---

- Traffic Controls
  - Road markings
    - Lane lines
    - Merging
    - Form one lane
    - Diagonal bars
    - Painted islands
    - Arrows and other road turn markings
  - Traffic signals
- Traffic Signs
  - Regulatory (Mandatory)
  - Warning (Advisory)
  - Information signs
  - Temporary signs
- Speed Limits
  - Radar Detectors
- Intersections
  - Giving way at intersections
  - Types of Intersections
    - T-Junctions
    - Cross roads
    - Roundabouts
- Turning
  - Left-hand turns
  - Slip lanes
  - Right-hand turns
  - Diamond turns
  - U-turns
  - 3-point turns
- Crossings
  - Pedestrian
  - Wombat
  - School
  - School zones
  - Railway
- Parking
  - Where not to park
  - How and where to park
  - Parallel parking
  - Centre of road parking
  - Angle parking
  - Goods vehicles
  - Heavy vehicles
  - Short stay parking
  - Parking meters
  - Ticket machines
  - Park 'n' ride
  - 3 for free parking
  - Mobility parking
  - Parking regulations
  - How to avoid infringements (PINs)
  - Parking Infringement Rules
  - Parking minimum distances



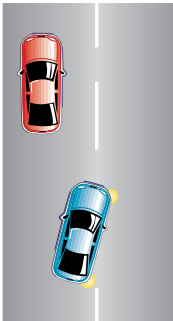
## Traffic controls

### Road markings

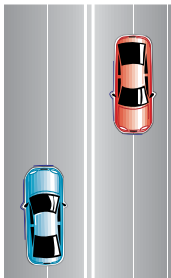
Many of the road markings you will see, and the rules you must follow, are set out below.

#### Lane lines

You should keep to the left of these lines. You can cross them to overtake if it is safe to do so, but otherwise you must drive as close to the left hand side of the road as practical.

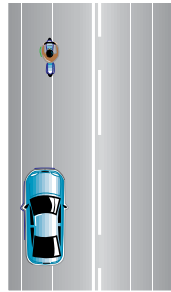


Broken line in centre of the road.



Double unbroken lines

Keep left and never cross these.



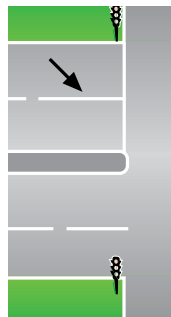
Double lines with an UNBROKEN line closer to you

Keep left and never cross these except to enter or leave a driveway.



Double lines with a BROKEN line closer to you

You may cross these lines to overtake or do a U-turn, or to enter or leave a driveway, if the road ahead is clear.



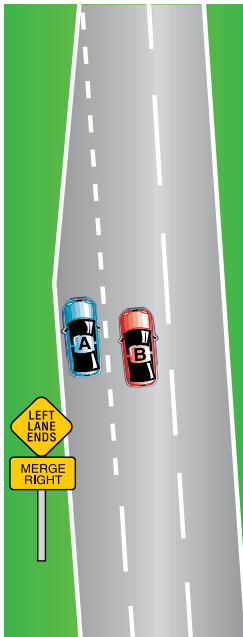
NEVER cross any single unbroken line at an intersection.



Keep left and never cross these except to enter or leave a driveway.

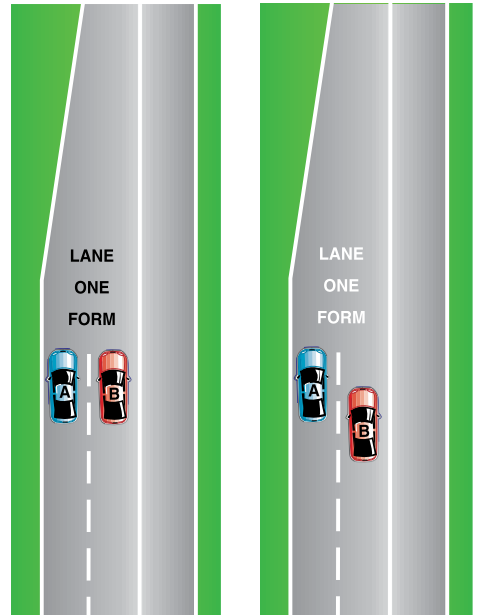
## Merging

Lane changing procedures are required when one lane ends and you are required to merge into another lane. This includes **using your mirrors, indicators and doing a head check**. If you have to cross a lane line, or merge line, you **MUST** give way to any vehicles in the lane that you wish to enter. You must not cross unless it is safe to do so.



Merging with continuous lane separation.  
A must give way to B.

## Form One Lane



**DIAGRAM 1:**  
Lane separation line ends

**DIAGRAM 2:**  
Lane separation line ends,  
Car B **MUST** give way to car A

A and B must both be prepared to give way or both may be charged following a collision.

### DIAGRAM 1

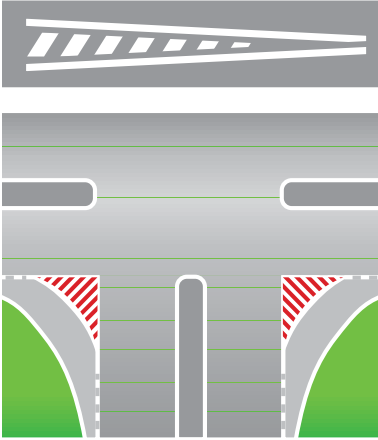
Be prepared to use lane changing procedures in this situation, ie using your mirrors, indicators and doing a head check.

Sometimes the lane separation line will end and both lanes of traffic are required to merge into one lane. **When merging in such cases, the vehicle that is ahead has the right of way over the trailing vehicle.**

### DIAGRAM 2

You should use care, commonsense and courtesy when merging.

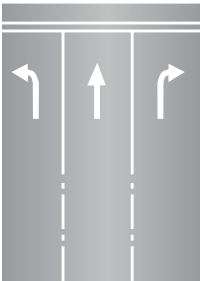
## Diagonal bars, painted islands



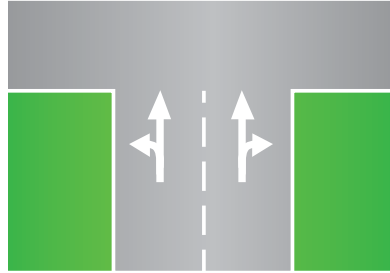
Do not enter a painted island at a slip lane, as indicated in red in the diagram, or other painted traffic islands, except in an emergency.

## Arrows and other road turn markings

When approaching intersections and exit ramps you may find white directional arrows with (or without) the word 'ONLY' painted on the road surface. Traffic in lanes with markings **MUST** proceed as indicated by the marking. It is illegal to ignore the word or the arrows.

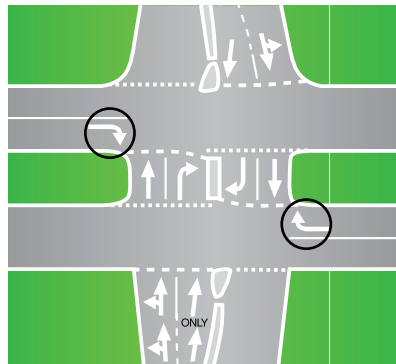


Traffic in left lane **MUST** turn left. Traffic in centre lane **MUST** proceed straight ahead. Traffic in right lane **MUST** turn right.



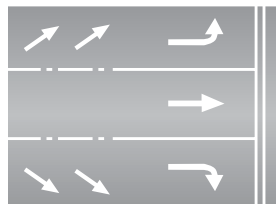
Traffic in the left lane **MUST** either turn left or proceed straight ahead. Traffic in the right lane **MUST** either turn right or proceed straight ahead.

The word 'ONLY' is used to reinforce the meaning of the arrow.

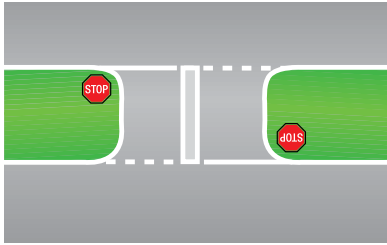


Right turn arrows

'Oblique' arrows are used to warn traffic that vehicles in a particular lane must turn further ahead. If you do not want to turn, you should change into another lane when it is safe to do so well before the intersection.



## Hold and turn lines

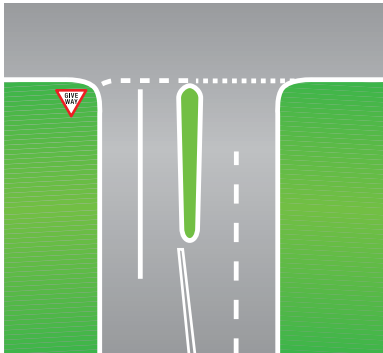


Stop hold lines

The hold line at a STOP sign shows you where you should stop.

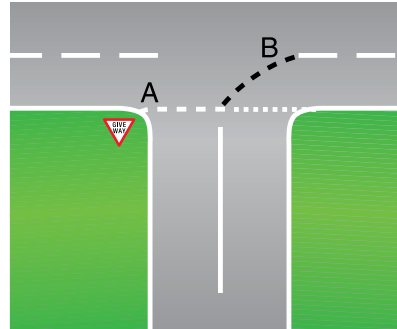
The front of the vehicle should not be past this line.

The road markings at stop and give way signs are gradually being altered to conform to the new Australian Standard.



Give way hold line

The hold line at a GIVE WAY sign shows you where you must stop, if you are required to give way.



Hold and turn lines

The hold line (A) and turn line (B) are for your guidance when turning at an intersection. Stay to the left of the turn line.

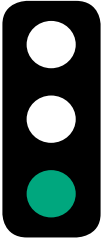
## Coloured bicycle lanes

Coloured bicycle lanes at intersections are to remind motorists that this section of the roadway is a travel lane for bicycle riders. The marking highlights the existence of the 'bicycle lane' to motorists and the 'right of way' legally provided to the cyclist by a 'bicycle lane'. Therefore, where you see a bicycle lane and particularly a green coloured area at an intersection, be on the lookout for cyclists. If a cyclist is in the bicycle lane, **motorists must give way.**



Green bicycle lane for cyclists

## Traffic Signals



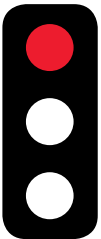
Green circle light alone means you may proceed directly ahead or make a turn in either direction providing it is safe to do so. All turning vehicles give way to pedestrians at traffic lights.

Right turning vehicles **MUST** give way to oncoming or left turning vehicles not using a slip lane.

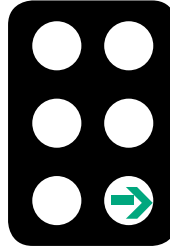
**NOTE: Accidents commonly occur at traffic lights when a right turning vehicle fails to give way to an oncoming vehicle. This usually occurs when there is no right turning traffic light arrow.**



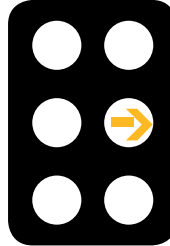
Yellow circle light warns that the red signal is about to come on. You must stop at the stop line and not enter the intersection or junction. You may enter the intersection if you are so close to the stop line that a sudden stop might cause an accident.



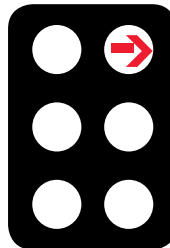
Red circle means STOP. Wait at the stop line marked on the road until the signal changes to green.



Green arrow light means you may turn in the direction shown by the arrow.

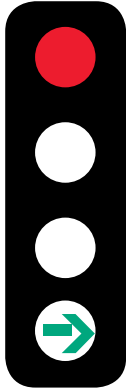


Yellow arrow light warns that the red signal is about to come on. You must stop at the stop line. Do NOT enter the intersection or junction if you intend to go in the direction of the arrow. You may enter the intersection if you are so close to the stop line that a sudden stop might cause an accident.



Red arrow light means you **MUST NOT** travel in the direction of the arrow. You **MUST STOP** at the stop line marked on the road at the approach to the signals.

The **ARROW** signals may be shown with any of the **CIRCLE** signals. Remember the **ARROW** signal **MUST** be obeyed if you intend to travel in the direction of the arrow.



When only the CIRCLE signal is displayed (for example, after the RED ARROW has switched off) the CIRCLE signal MUST be obeyed.



Flashing yellow traffic signals mean either the traffic signals are malfunctioning or there is a dangerous situation at the intersection or junction. If you see flashing yellow signals slow down and be prepared to stop or give way, in accordance with the T junction rule or the give way rule.

### Give way to the right

When signals are flashing or are 'out' the give way to the right rule applies at intersections, ie give way to all vehicles on your right.

For a T junction, traffic on the terminating street gives way to all traffic on the continuing street when signals are malfunctioning.

Give way to the right also applies at any uncontrolled intersection, or when exiting a slip lane while turning left.

Stop and Give Way signs also require drivers to give way to the right, and also give way to all other approaching traffic.

Pedestrians using pedestrian crossings at traffic lights must obey the signals. The signal may show 'walk', 'don't walk' or a person symbol.



(NOT FLASHING)

Pedestrians must not cross



Pedestrians may start to cross



(FLASHING)

Pedestrians must not start to cross but may complete their crossing quickly.



This sign is to remind drivers that they are required to give way to pedestrians when turning at an intersection

**Note: Drivers at intersections who are turning left or right must give way to all pedestrians who are crossing.**

## Traffic signs

Australian road traffic signs may be classified into four basic types:

- Regulatory signs (mandatory);
- Warning signs (advisory);
- Information signs; and
- Temporary signs.

### Regulatory signs (mandatory)

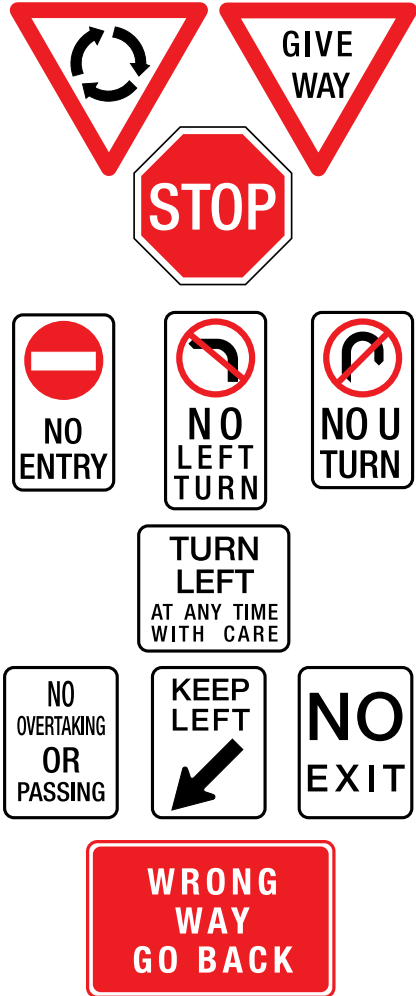
These signs are usually red or black on white background. Drivers are required by law to obey regulatory signs.

At a stop sign, you must bring your vehicle to a complete stop, with no part of the vehicle over the unbroken (hold) line on the road surface. You must then give way to all vehicles approaching from the left or right.

At a give way sign, the rules are the same as those for a stop sign, except that you are not required to stop if the road is clear and you can continue with safety. If you need to stop to give way, no part of your vehicle can be over the give way (broken/hold) line. Only proceed when it is safe to do so.

Where two oncoming vehicles each face a stop sign or give way sign, a vehicle turning right must give way to the oncoming vehicle ie. the vehicle moving straight ahead.

Where one vehicle faces a stop sign and an oncoming vehicle does not face any sign, the vehicle facing the stop sign must give way to the oncoming vehicle if the oncoming vehicle intends to turn right. Only proceed when it is safe to do so.



Examples of regulatory signs

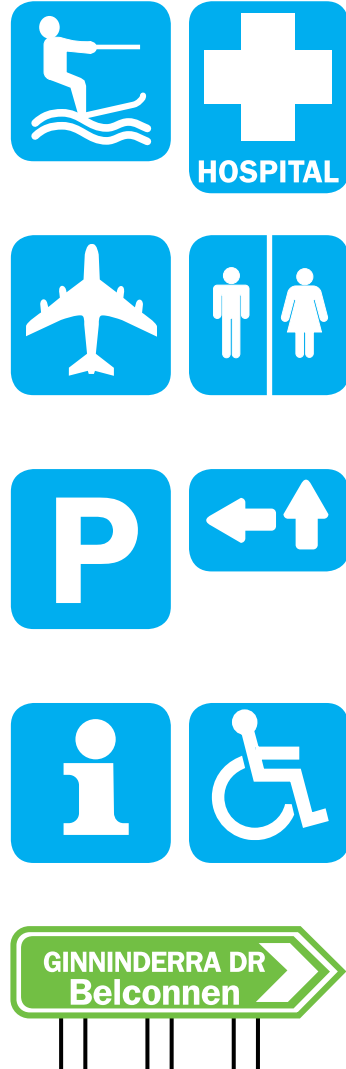
## Warning signs (advisory)

These signs usually indicate a hazard ahead.



## Information signs

These signs usually give directions to local features.



## Temporary signs

Used usually when a road is under repair.



Loose gravel caution



Traffic controller ahead



Workmen ahead



Wet tar



Traffic hazard ahead



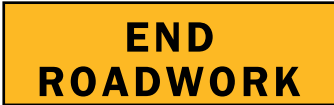
Rough surface



Half road closed



Detour ahead



End roadwork



Roadwork ahead



Reduce speed



Stop



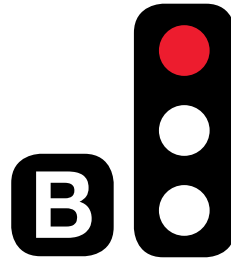
Slow

## Bus priority traffic signals

Bus priority traffic signals allow for buses that are in a bus lane, to move off when a white 'B' signal is showing, while all other traffic is still held by a red traffic signal.

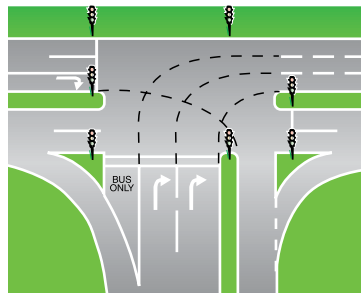
The 'B' signal is activated only when a bus is in the bus only lane at traffic signal intersections.

The white 'B' goes off when the red light turns to green, allowing all traffic to proceed.



Bus priority signals give buses a 'head start' at lights, in order to make changing lanes and merging in heavy traffic easier and safer.

It should be noted that **only Buses, Taxis, Hire Cars, and Motorcycles** are permitted to use a bus lane **in the ACT**. Vehicles other than those mentioned above **must not** drive in bus lanes.



## Speed limits

---

### ACT default speed limit

The default speed limit in a built up area is 50 km/h for the ACT, unless a sign shows a higher or lower speed limit on a length of road.

Houses and streetlights, with the absence of speed signs, denote a built-up area where the default speed limit is 50 km/h. The default speed limit in a rural area in the ACT is 100 km/h.

### Speed zones

These are for example; school zones, road worksite zones, shared zones, residential area zones etc, and are signed for the length of the zone. You MUST obey the speed limit shown on the signs, as applicable, and pay close attention to cyclists and pedestrian traffic.

### Safe speed

You will often need to reduce your speed owing to road surface and alignment, low sight distance, intersections, driveways, weather, traffic density, pedestrians, cyclists, wildlife, and on occasion, farm stock. Always drive at a legal speed comfortable for you, your car and your passengers, but at a speed that will not obstruct other road users.

Speed is the most important factor that you can control in the severity of a crash, even if you are not the driver 'at fault'. It might not feel like you are going very fast, but:

- If you have a side-impact crash with a solid tree, pole or other vehicle at more than 50 km/h, you or your passengers are extremely likely to be seriously injured or killed.
- If you have a head-on crash with another vehicle at 70 km/h or more you are almost certain to be seriously injured or killed.
- Pedestrians and cyclists don't have the protection of a vehicle to cushion them in a crash. They rely on you to drive carefully around them. In a Safe System, high - pedestrian use areas have a low speed limit.
- If a pedestrian or cyclist is hit at over 30 km/h they will be seriously injured and may die.

### Be very careful around children

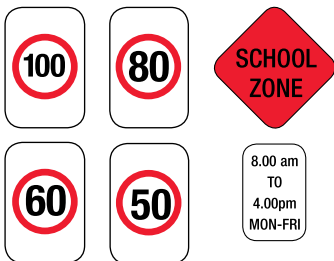
- They don't understand the road rules.
- They aren't very good at choosing a safe time to cross the road.
- They can be impulsive.
- You might be in control of your vehicle, but you can't control what they do. The best you can do is reduce your speed and be very alert, particularly in school zones, at crossings and around parked cars.

## Speed restriction signs

For roads with a speed limit **other** than the **default** speed limit of **50 km/h**, a speed restriction sign is the legal maximum speed you may drive at on the length of road, to which the sign is posted. Take into account factors outlined under 'safe speed'.

## Posted speed limits

Learner and provisional licence holders **are** permitted to drive to the **posted speed limit** in the ACT. Other States, such as NSW, have different speed limit regulations for their learner and provisional drivers. ACT learner drivers/riders driving or riding in NSW **are not** permitted to exceed **80 km/h**. Provisional licence holders **are** permitted to drive to the **posted speed limits** in NSW. Learner and provisional drivers travelling in States and Territories other than NSW should check with the jurisdiction where they intend to drive for local speed regulations that apply.



## Speed and red light cameras

Fixed speed and red light cameras have been placed at various locations within the ACT to address the dangerous practices of speeding and running red lights.

Sensors embedded in the road detect the presence of vehicles at the red light cameras. If a vehicle drives through a red light, a signal is sent to the camera, which then takes a series of photographs of the vehicle as well as a close-up of the number plate.

The same sensors also calculate the speed of vehicles and activate the camera if the pre-set speed limit is exceeded. This occurs regardless of whether the traffic lights are green, red or amber.

Vehicles that are speeding and running red lights at the same time can incur infringement notices for both offences.

The images and infringement details, including the time and location, are digitally recorded and downloaded to the Traffic Camera Office.

A number of fixed speed only cameras have been placed on high volume higher speed roads using sensors in the road or radar detectors.

Point-to-point cameras measure the average speed of a vehicle over a stretch of road and discourage drivers from the practice of speeding up and slowing down to avoid detection by conventional fixed safety cameras. The ACT's first point-to-point installation on Hindmarsh Drive will commence operation from early 2012.

## **What to do when the traffic lights change to amber**

The amber light is a warning that the traffic signal is about to turn red and you must stop unless you are too close to the intersection to pull up safely. There is no need for panic braking, which could result in someone running into the back of your vehicle, or for accelerating over the speed limit. However, if you continue through the intersection after the traffic light has turned red, you will receive an infringement notice.

Drivers are reminded that they are required to maintain a sufficient distance from the vehicle ahead to enable them to avoid a collision should it stop unexpectedly. Road safety experts recommend you keep a gap of at least three seconds between your vehicle and the one in front.

## **What happens when a vehicle is photographed**

If you are identified as the registered operator of a vehicle detected by a camera for running a red light or exceeding the speed limit, you will receive an infringement notice in the mail, usually within five working days of the offence.

As with other traffic infringement notices, you have 28 days to either pay the fine or take some other action.

Anyone issued with an infringement notice for a camera detected offence can examine the image produced by the camera, and obtain a copy if required.

## **Mobile speed cameras**

Mobile speed cameras are also in use within the ACT.

Mobile cameras may be operated from inside the vehicles provided for this purpose or mounted outside the vehicle on a tripod. Cameras can operate in both directions (monitor traffic in both directions). Generally vans are used for speed camera operations. Other vehicles may be used during periods when vans are being maintained.

At night one or more flash units may be deployed to enhance the image taken of motorists committing an offence. These flash units can be deployed from the speed camera vehicle and triggered by infrared light emission.

## **Radar detectors**

It is an offence in the ACT to use, sell or offer for sale or purchase a traffic offence evasion article such as a radar detecting device or radar jamming device.

It is also an offence to drive or park a motor vehicle in the ACT fitted with such a device, and an owner found guilty of an offence is liable for a substantial fine.

The Police may demand that any device fitted to a motor vehicle be surrendered to them, or surrendered within a specified time or manner to any ACT Police Station. Failure to comply may lead to a substantial fine.

# Intersections

---

## Giving Way

There are three types of intersections:

- T-junctions;
- cross roads; and
- roundabouts.

Drivers must take action to avoid a crash. Sometimes this may mean giving way at intersections when the law would otherwise not require you to. In other words drive defensively so as to reduce your chance of a crash.

The law says you must give way to:

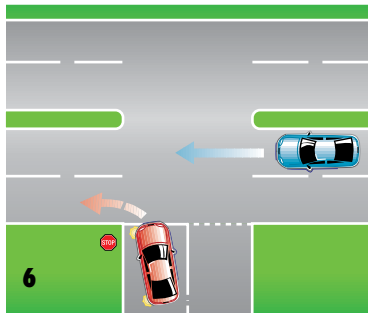
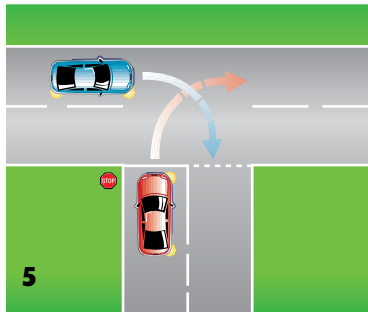
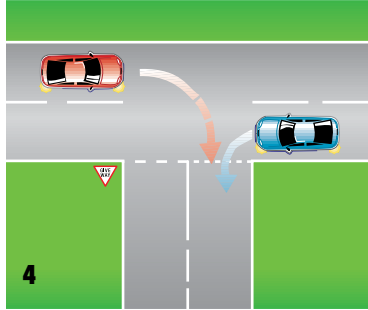
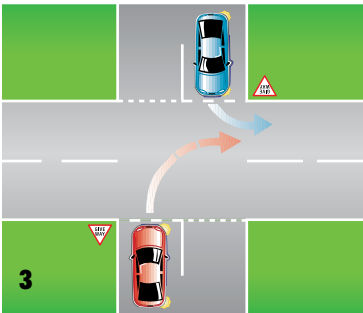
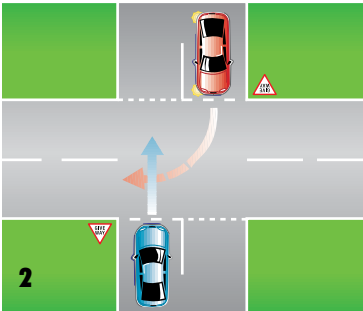
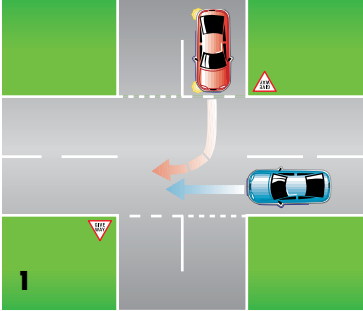
- a vehicle on a continuing street if you are on a terminating street at a T- junction (diagrams 5, 6, 7, 8);
- a vehicle on your right at an uncontrolled intersection (diagram 9);
- vehicles on your left and right if you face a GIVE WAY sign or a STOP sign (diagram 1);
- vehicles already circulating on a roundabout (diagram 11);
- all traffic when leaving a car park or private driveway;
- all traffic before pulling out from the kerb;
- vehicles on your right if you face a “Turn Left At Any Time With Care” sign (diagram 12);

- oncoming or left turning traffic when turning right (diagram 2, 3, 4);
- all traffic before doing a U-turn or a three-point turn;
- emergency vehicles sounding their sirens and/or flashing their emergency lights;
- pedestrians at traffic signals when you are turning left or right;
- pedestrians on the road the driver is entering if you face a GIVE WAY sign or STOP sign or where there are no signs;
- pedestrians on pedestrian crossings;
- pedestrians approaching or on any part of a school crossing;
- all other vehicles when exiting a slip lane (diagram 10).

If in doubt, be prepared to give way to all other vehicles.

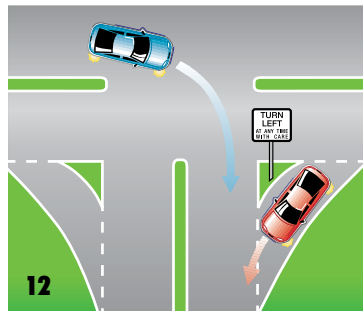
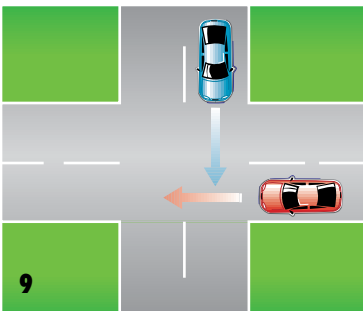
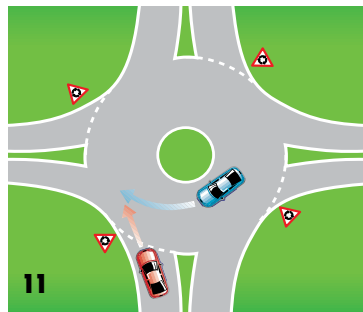
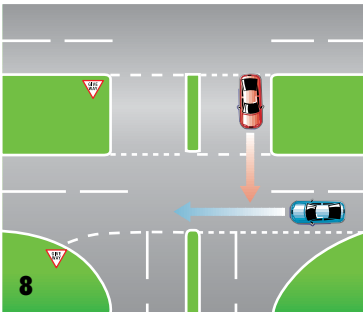
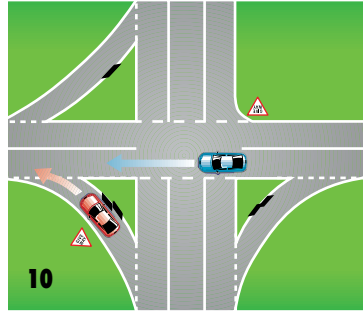
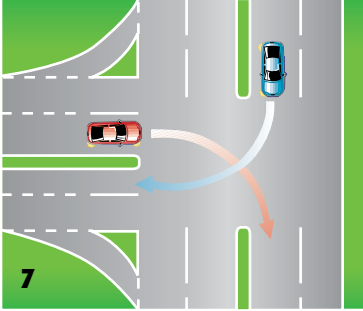
# Examples of giving way at intersections

In each of the following diagrams the red car must give way.



# Examples of giving way at intersections (continued)

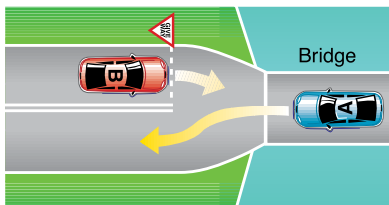
In each of the following diagrams the red car must give way.



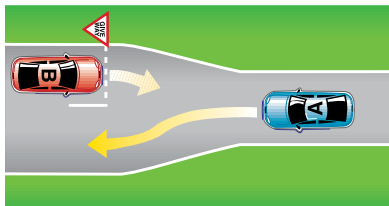
## Additional give way rules and examples as depicted in the Australian Road Rules

### *Giving way at a give way sign at a bridge or length of narrow road*

A driver approaching a bridge or length of narrow road with a give way sign must give way to any oncoming vehicle that is on the bridge or length of road when the driver reaches the sign.



Example 1 - Giving way at a bridge.



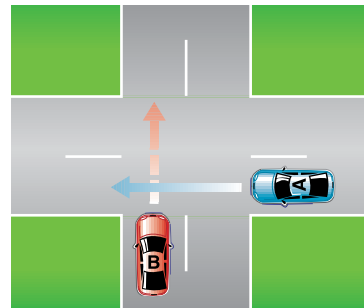
Example 2 - Giving way at a length of narrow road.

In each example, vehicle B must give way to vehicle A.

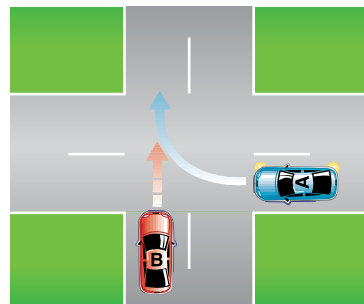
## Giving way at an intersection (except a T-intersection or roundabout)

If the driver is going straight ahead, the driver must give way to any vehicle approaching from the right, unless a stop sign, stop line, give way sign or give way line applies to the driver of the approaching vehicle.

A driver at an intersection (except a T-intersection or roundabout) without traffic lights or a stop sign, stop line, give way sign or give way line, must give way in accordance with this rule.



Example 1 - Driver going straight ahead giving way to a vehicle on the right that is going straight ahead

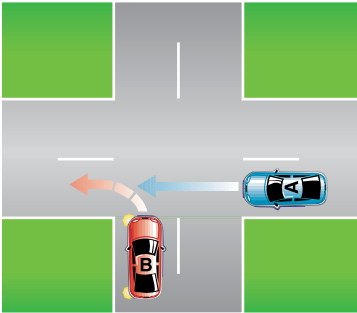


Example 2 - Driver going straight ahead giving way to a vehicle on the right that is turning right

In each example, vehicle B must give way to vehicle A.

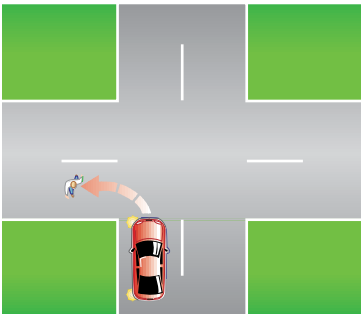
If the driver is turning left (except if the driver is using a slip lane), the driver must give way to:

- (a) any vehicle approaching from the right, unless a stop sign, stop line, give way sign or give way line applies to the driver of the approaching vehicle; and
- (b) any pedestrian at or near the intersection on the road the driver is entering.



Example 3 - Driver turning left giving way to a vehicle on the right that is going straight ahead

In example 3, vehicle B must give way to vehicle A.

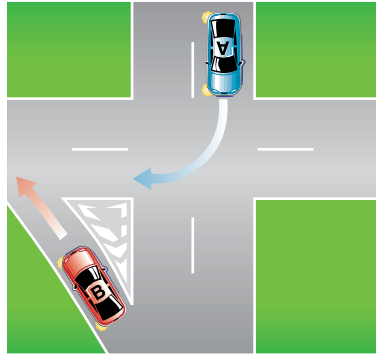


Example 4 - Driver turning left giving way to a pedestrian on the road the driver is entering.

In example 4, the vehicle must give way to the pedestrian.

If the driver is turning left using a slip lane, the driver must give way to:

- (a) any vehicle approaching from the right or turning right at the intersection into the road the driver is entering (except a vehicle making a U-turn at the intersection); and
- (b) any pedestrian on the slip lane.

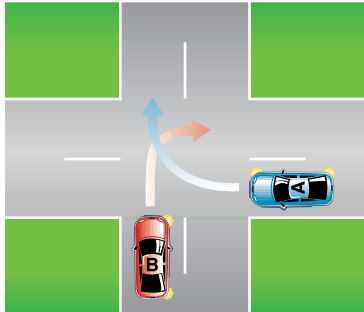


Example 5 - Driver turning left using a slip lane giving way to vehicle that is turning right into the road the driver is entering.

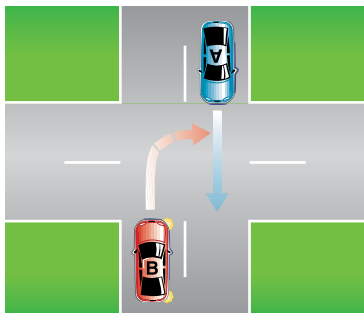
If the driver is turning right, the driver must give way to:

- (a) any vehicle approaching from the right, unless a stop sign, stop line, give way sign or give way line applies to the driver of the approaching vehicle; and
- (b) any oncoming vehicle that is going straight ahead or turning left at the intersection, unless:
  - (i) a stop sign, stop line, give way sign or give way line applies to the driver of the oncoming vehicle; or
  - (ii) the oncoming vehicle is turning left using a slip lane; and

- (c) any pedestrian at or near the intersection on the road the driver is entering.

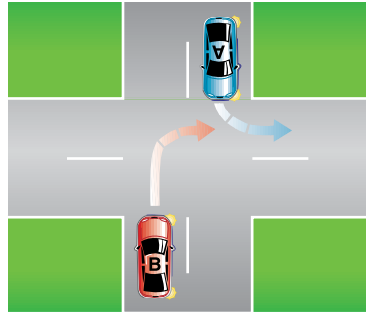


Example 6 - Driver turning right giving way to a vehicle on the right that is turning right into the road the driver is leaving.



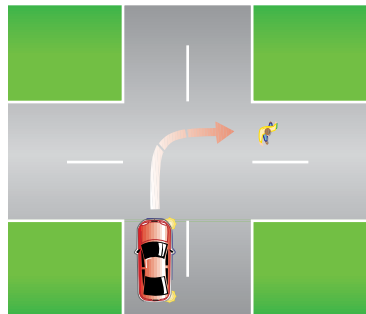
Example 7 - Driver turning right giving way to an oncoming vehicle that is going straight ahead on the road the driver is leaving.

In examples 6 and 7, vehicle B must give way to vehicle A.



Example 8 - Driver turning right giving way to an oncoming vehicle that is turning left into the road the driver is entering.

In example 8, vehicle B must give way to vehicle A.



Example 9 - Driver turning right giving way to a pedestrian on the road the driver is entering.

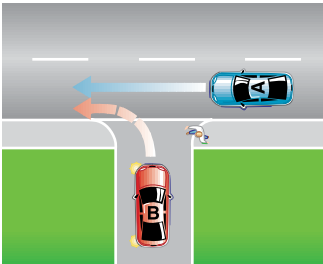
In example 9, the vehicle must give way to the pedestrian.

### Giving way when entering a road from a road-related area or adjacent land

A driver entering a road from a road-related area, or adjacent land, without traffic lights or a stop sign, stop line, give way sign or give way line must give way to:

- (a) any vehicle travelling on the road or turning into the road (except a vehicle turning right into the road from a road-related area or adjacent land);
- (b) any pedestrian on the road;
- (c) any vehicle or pedestrian on any road-related area that the driver crosses to enter the road; and
- (d) for a driver entering the road from a road-related area — any pedestrian on the road-related area and any other vehicle ahead of the driver's vehicle or approaching from the left or right.

Adjacent land or a road-related area can include a driveway, service station or shopping centre.



Driver entering a road from a road-related area giving way to a pedestrian on the footpath and a vehicle on the road.

In this example, vehicle B must give way to the pedestrian on the footpath and to vehicle A.

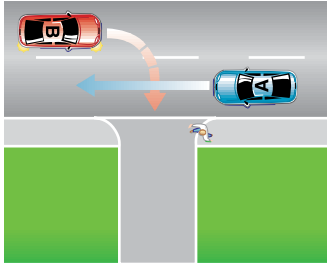
### Giving way when entering a road-related area or adjacent land from a road

A driver entering a road-related area or adjacent land from a place on a road without traffic lights or a stop sign, stop line, give way sign or give way line must give way to:

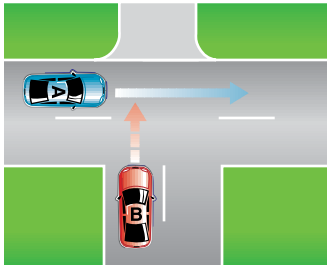
- (a) any pedestrian on the road;
- (b) any vehicle or pedestrian on any road-related area that the driver crosses or enters;
- (c) (if the driver is turning right from the road) any oncoming vehicle on the road that is going straight ahead or turning left; and
- (d) (if the road the driver is leaving ends at a T-intersection opposite the road-related area or adjacent land and the driver is crossing the continuing road) any vehicle on the continuing road.

A **road related area** is any of the following:

An area that divides a road; a footpath or nature strip adjacent to a road; an area that is not a road and that is open to the public and designated for use by cyclists or animals; an area that is not a road and that is open to or used by the public for driving, riding or parking vehicles (eg, a car park).



Example 1 - Driver turning right from a road into a road-related area giving way to an oncoming vehicle that is going straight ahead and to a pedestrian on the footpath.



Example 2 - Driver crossing a continuing road at a T-intersection to enter a road-related area giving way to a vehicle on the continuing road.

In each example, vehicle B must give way to vehicle A. In example 1, vehicle B must also give way to the pedestrian on the footpath.

## Types of intersections

### T- intersections

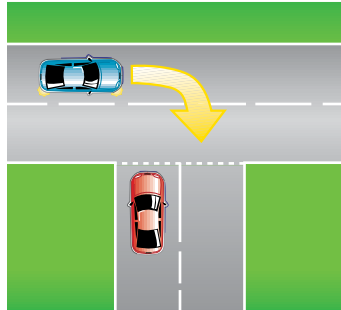
A T -intersection is formed where a road meets another and does not continue.



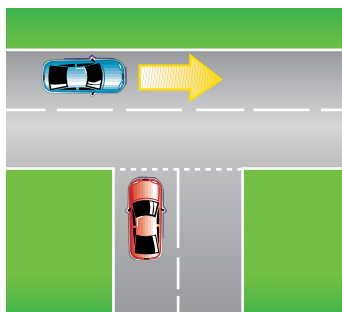
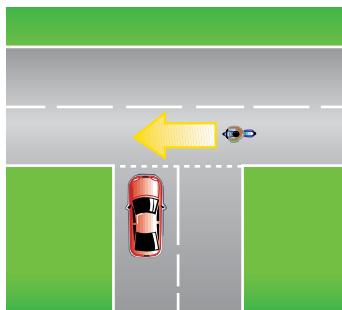
Two types of T- intersections

When two vehicles approach a T- intersection from different roads and there is reasonable possibility of a collision, the driver of the vehicle on the terminating road must give way to the vehicle in the continuing road.

### Giving Way at T- Intersections



In this example, the driver of the red car must give way to the driver of the blue car.



The red vehicle gives way in each case

At unusual intersections, eg Y- intersections where it is not clear who is on the terminating road, there will generally be GIVE WAY or STOP sign erected to advise drivers which vehicle must give way.

Drivers turning at a T intersection must give way to any pedestrian on the road the driver is entering whether they are turning from the continuing road or the terminating road.

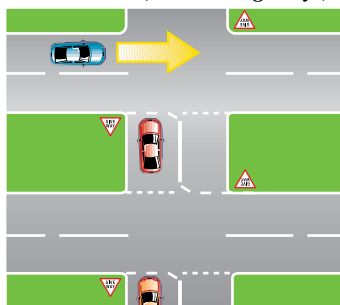
**Note: If in doubt be prepared to give way to all other vehicles.**

## Cross roads

A cross road is formed where two continuing streets intersect.

Before crossing or turning at an intersection, only proceed when you are sure it is safe and that you will not block the road by having to stop within the intersection.

## Divided roads (dual carriageways)



Divided road intersection

Road rules and traffic movement at divided road intersections are the same as those at single road intersections.

When a two-way road is divided by a median strip, a GIVE WAY or STOP sign applies to the WHOLE of the intersection. A vehicle which has stopped adjacent to the median strip in the middle of the intersection is still controlled by the STOP or GIVE WAY signs.

A wide central median strip may allow a vehicle to proceed to the position shown on the diagram. However, if there is a narrow central strip, a driver should not enter the intersection unless the intersection can be negotiated without stopping.

The median strip or nature strip within a dual carriageway must not be driven on.