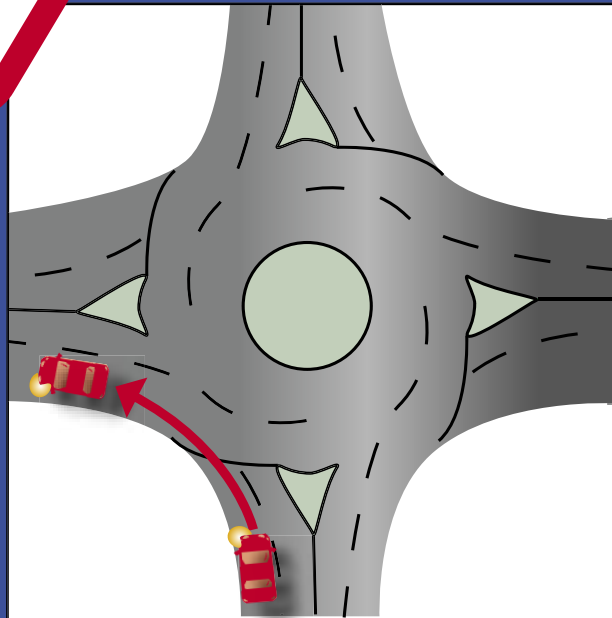
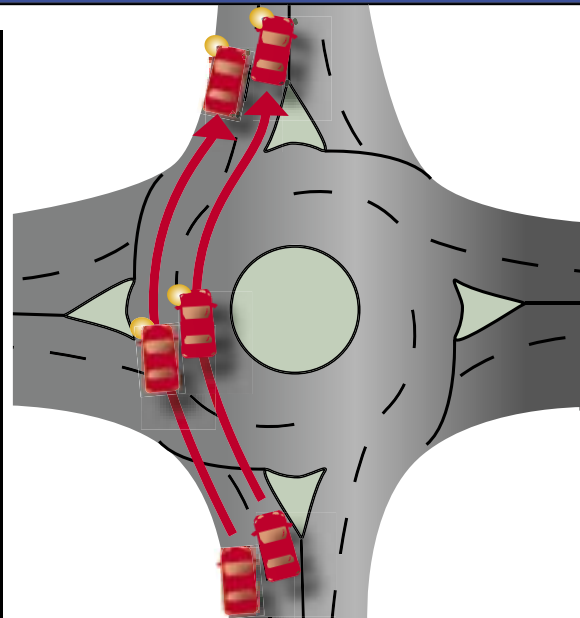


Do you know your Roundabout Rules?

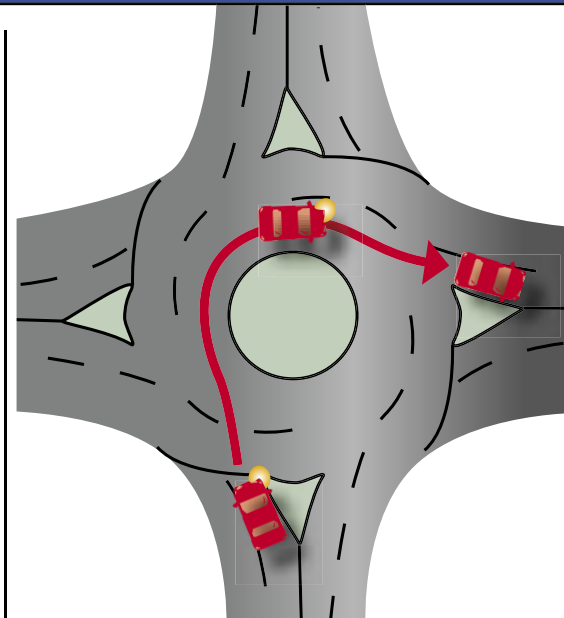
Observe these simple rules when negotiating roundabouts



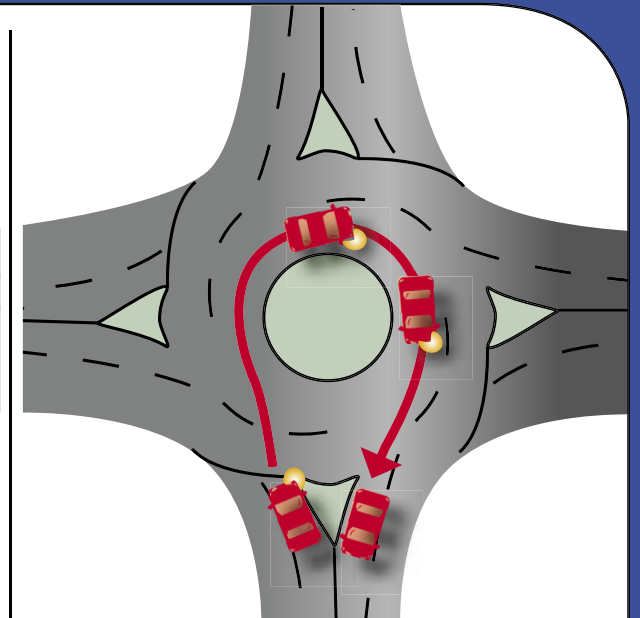
When approaching a multi-lane roundabout with the intention of turning left approach in the left hand lane, operate the left hand indicator before entering the roundabout and continue to indicate throughout the turn.



When approaching a multi-lane roundabout with the intention of continuing straight ahead, approach in either the left or right hand lane and operate the left hand indicator after entering the roundabout and continue to indicate throughout the turn.



When approaching a multi-lane roundabout with the intention of turning to the right, approach in the right hand lane and operate the right hand indicator before entering the roundabout, continue to operate the indicator until approaching the exit lane and then indicate left.



When approaching a multi-lane roundabout with the intention of continuing all the way around the roundabout (U-turn), approach in the right hand lane, operate the right hand indicator before entering the roundabout and continue to operate the indicator until approaching the exit lane and then indicate left, exit in the right hand lane.

If you follow these simple rules, other road users will be aware of your intentions at roundabouts.



'For more information about road rules, the ACT Road Rules Handbook can now be viewed on-line at www.transport.act.gov.au'