



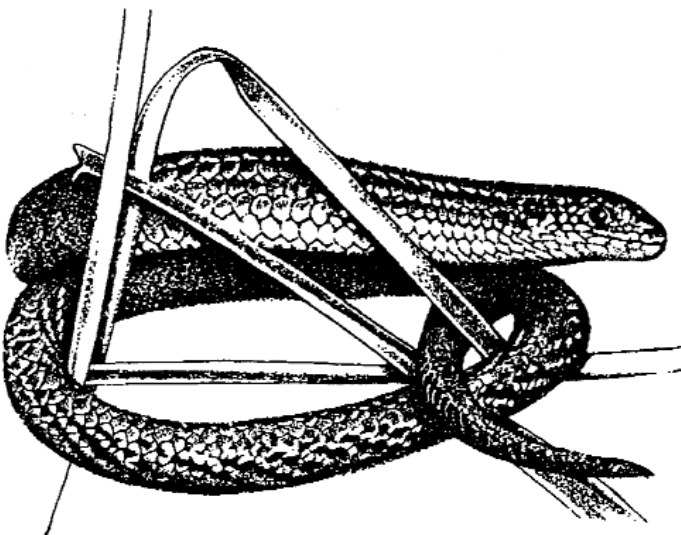
## THREATENED SPECIES AND COMMUNITIES OF THE ACT

# Striped Legless Lizard (*Delma impar*)

A vulnerable species

Issued: 18 May 2006

The Striped Legless Lizard (*Delma impar*) grows to about 300 mm and is variable in colour but is most commonly pale grey-brown above, with a series of dark brown or blackish longitudinal stripes along the length of the body and tail. However, in some individuals (particularly the young), striping is indistinct or absent.



The species lives primarily in natural temperate grassland that is dominated by perennial tussock grasses, although it is also found in some areas dominated by exotic grasses.

It feeds on a variety of arthropods including spiders, crickets, cockroaches and caterpillars.

The geographic range of *Delma impar* is confined to south-eastern Australia. It is currently known to occur at several locations in the basalt plains to the north and west of Melbourne in Victoria, with isolated records near Yass, Goulburn, Cooma, Batlow and immediately north of the ACT in NSW.

In the ACT, the species is known to occur at four separate locations—in grassland areas of Gungahlin, Majura and Jerrabomberra Valleys, and Yarramundi Reach on the shores of Lake Burley Griffin. Unsuitable habitat, roads and urban development separate these sites. Only one population (Gungahlin grassland reserves) is protected.

Throughout its range, the species is considered to have suffered a substantial contraction in its distribution since European settlement.

Most areas where the species persists, are thought to have had low to moderate levels of agricultural disturbance in the past and it has been suggested that ploughing in particular, may be incompatible with the survival of the species.

## CONSERVATION THREATS

In common with other threatened grassland animals, the main threats to the Striped Legless Lizard are:

- loss and fragmentation of habitat;
- degradation of habitat;
- impacts of predators; and
- direct human disturbance.

## CONSERVATION ACTIONS

- Continue to consider to the possible presence of the species when undertaking surveys in appropriate habitat.
- Encourage, support, coordinate, and where practicable, undertake research into the biology and ecology of the species as the basis for managing the species and its habitat.

—Continued over page



- Encourage management to be undertaken in an adaptive framework, and facilitate the incorporation of research results into management of species and their habitats.
- Seek protection of key habitat known to support viable populations of the species across its range in the ACT.
- Maintain links with, and participate in, regional and national recovery efforts for threatened grassland species to ensure that conservation actions are coordinated with regional and national programs.

#### **FURTHER INFORMATION**

The primary source of information for this information sheet is the ACT Lowland Native Grassland Conservation Strategy—Action Plan No. 28, where a full bibliography is available.

Action plans are available online at [www.environment.act.gov.au](http://www.environment.act.gov.au) or by calling Canberra Connect on 13 22 81.

#### **Acknowledgement**

The illustration of the species was prepared for Environment ACT by Marjorie Crosby-Fairall.