



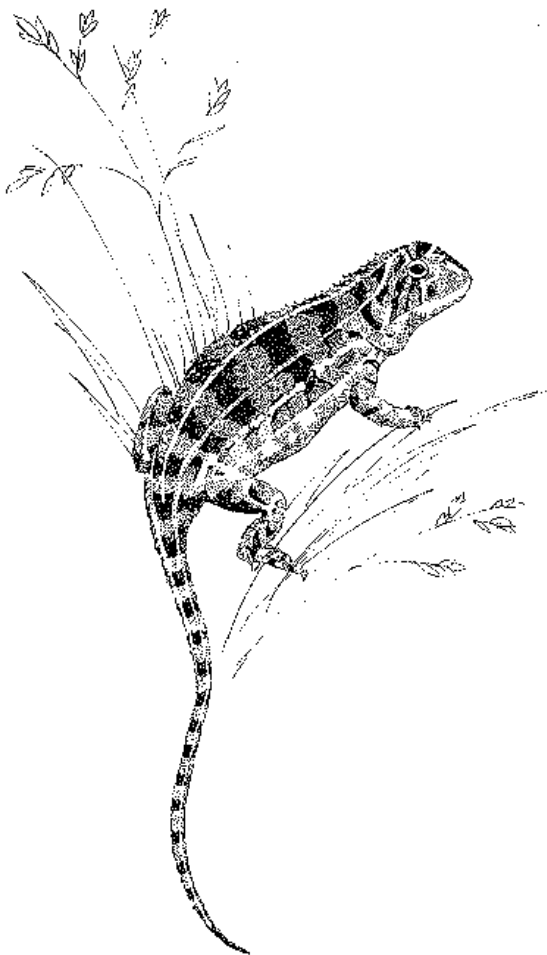
THREATENED SPECIES AND COMMUNITIES OF THE ACT

Grassland Earless Dragon (*Tympanocryptis pinguicolla*)

An endangered species

Issued: 18 May 2006

The Grassland Earless Dragon is a small lizard with a stout body and short robust limbs. Total adult body length is between 180 and 210 mm. These lizards have three longitudinal light stripes on the dorsal surface and the ventral surface is either intricately patterned with dark brown or grey markings or immaculate white or cream.



In the Canberra-Monaro region the Grassland Earless Dragon appears to be restricted to Natural Temperate Grassland that is dominated by perennial tussock-forming species. It is known to make use of grass tussocks as well as small holes in the ground that are also used by invertebrates such as wolf spiders and crickets. Spiders and insects appear to comprise its main diet.

In the past, the Grassland Earless Dragon was found near Melbourne, Rutherglen, Bathurst, Cooma and Canberra. Recent information indicates that it has disappeared from Victoria and Bathurst.

The species is known to occur in suitable native grassland habitat in the Majura and Jerrabomberra valleys in the ACT and at 'Letchworth' near Queanbeyan in NSW. It has also been recorded at several sites near Cooma NSW.

CONSERVATION THREATS

In common with other threatened grassland animal species, the main threats to the Grassland Earless Dragon are:

- loss and fragmentation of habitat;
- degradation of habitat;
- impacts of predators; and
- direct human disturbance.

—Continued over page





CONSERVATION ACTION

- Continue to consider the possible presence of the species when undertaking surveys in appropriate habitat.
- Encourage, support, coordinate, and where practicable, undertake research into the biology and ecology of the species as the basis for managing the species and its habitat.
- Encourage management to be undertaken in an adaptive framework, and facilitate the incorporation of research results into management of species and their habitats.
- Seek protection of key habitat known to support viable populations of the species across its range in the ACT.
- Maintain links with, and participate in, regional and national recovery efforts for threatened grassland species to ensure that conservation actions are coordinated with regional and national programs.

FURTHER INFORMATION

The primary source of information for this information sheet is the ACT Lowland Native Grassland Conservation Strategy—Action Plan No. 28, where a full bibliography is available.

Action plans are available online at www.environment.act.gov.au or by calling Canberra Connect on 13 22 81.

Acknowledgement

The illustration of the species was prepared for Environment ACT by Liz Faul.