

Losing Control



Why this is a Road Safety Issue:

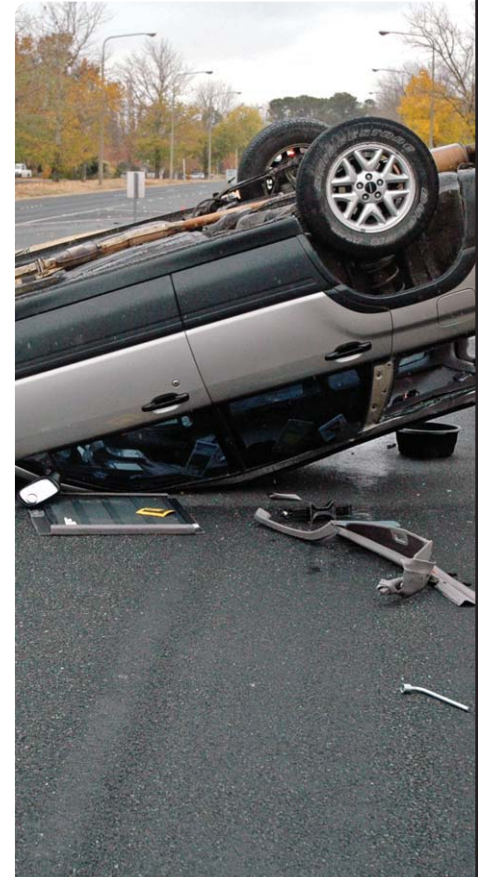
- ▶ Single vehicle crashes occur when drivers lose control of their vehicle.
- ▶ Typically these crashes occur when drivers have travelled at an inappropriate speed or have failed to drive to the conditions and circumstances on the road.
- ▶ The consequences can be severe, particularly when excessive speed is involved.

What the ACT Government is doing:

- ▶ Implementing awareness campaigns to encourage all road users to understand the road rules, and the obligations of safe driving.
- ▶ Designing and maintaining the roads to minimise danger on the roadsides if drivers lose control.

What You Can Do:

- ▶ Focus on the speed limit. Speeding makes roadholding, stopping and safe cornering far more difficult. Speeding drivers impose on other drivers around them.
- ▶ Pay attention to the weather, and be prepared to slow down for slippery conditions.
- ▶ Slow down before corners and roundabouts, and then accelerate smoothly out to keep good traction. Too fast on the approach and you won't make the exit.
- ▶ Scan ahead for changes to surface, road direction and the behaviour of other drivers, and be prepared to slow or stop if needed.



'Road Safety – It's Everyone's Responsibility'