

## Roundabouts

The following roundabout rules are quoted from the Australian Road Rules and are recognised nationally.

### *What is a roundabout?*

A roundabout is an intersection with: one or more marked lanes, or lines of traffic, all of which are for the use of vehicles travelling in the same direction around a central traffic island; and a roundabout sign at each entrance.



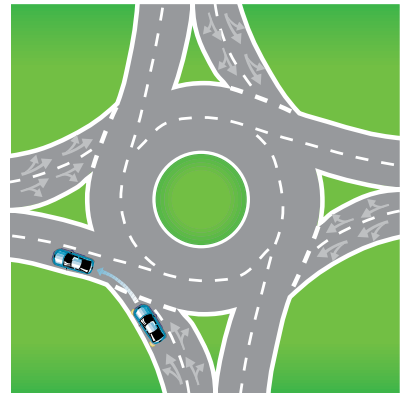
Roundabout sign

### *Entering a roundabout from a multi-lane road or a road with two or more lines of traffic travelling in the same direction*

A driver entering a roundabout from a multi-lane road, or a road with two or more lines of traffic travelling in the same direction as the driver, must enter the roundabout in accordance with these rules:

### *Leaving a roundabout less than halfway around it*

If the driver is to leave the roundabout less than halfway around it, the driver must enter the roundabout from the left marked lane or left line of traffic.

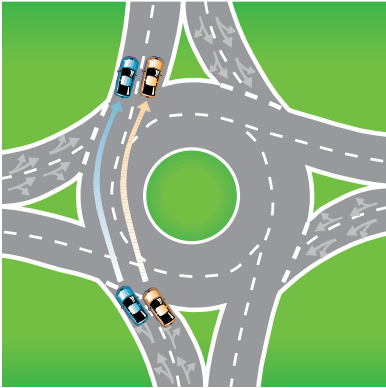


Example 1 - Leaving a roundabout less than halfway around it.

**In simple terms:** When approaching a multi-lane roundabout with the intention of turning left; approach in the left hand lane, operate the left hand indicator before entering the roundabout and continue to indicate throughout the turn (Example 1 refers).

### *Leaving a roundabout halfway around it*

A driver leaves a roundabout halfway around the roundabout, if the driver leaves the roundabout on a road that is straight ahead, or substantially straight ahead, from the road on which the driver enters the roundabout.



Example 2 - Leaving a roundabout halfway around it.

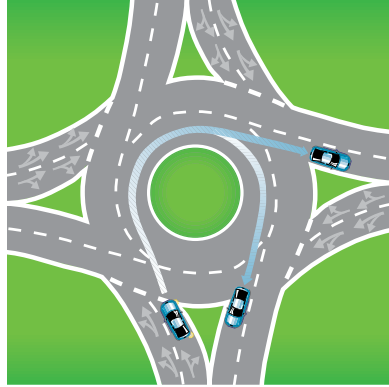
**In simple terms:** When approaching a multi-lane roundabout with the intention of continuing straight ahead, approach in either the left or right hand lane (Example 2 refers) and operate the left hand indicator when leaving the roundabout.

### *Entering a roundabout*

It is not a requirement to indicate before ENTERING a roundabout if you are proceeding straight ahead and intend leaving the roundabout half way around it.

### *Leaving a roundabout more than halfway around it*

If the driver is to leave the roundabout more than halfway around it, the driver must enter the roundabout from the right marked lane or right line of traffic.

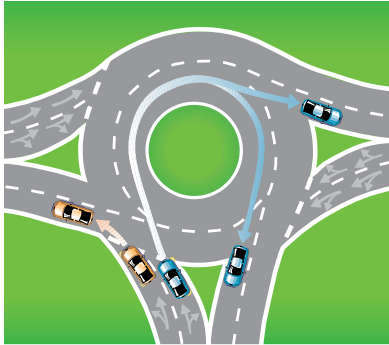


Example 3 - Leaving a roundabout more than halfway around it

**In simple terms:** When approaching a multi-lane roundabout with the intention of turning to the right, approach in the right hand lane and operate the right hand indicator before entering the roundabout (Example 3 refers), continue to operate the indicator until approaching the exit lane and then indicate left.

### ***Continuing all the way around a roundabout***

If the driver is to drive all the way around the roundabout, or more than three quarters of the way around it, the driver must enter the roundabout from the right marked lane or right line of traffic.



Example 4 - Roundabout with 3 entry points

**In simple terms:** When approaching a multi-lane roundabout with the intention of continuing all the way around the roundabout (U-turn), approach in the right hand lane, operate the right hand indicator before entering the roundabout and continue to operate the indicator until exiting the roundabout in the right hand lane. (Example 4 refers)

### ***Giving way when entering a roundabout***

A driver entering a roundabout must give way to any vehicle in the roundabout.

### ***Driving in a roundabout to the left of the central traffic island***

A driver driving in a roundabout must drive to the left of the central traffic island in the roundabout.

### ***Obeying traffic lane arrows when driving in or leaving a roundabout***

If a driver is driving in a marked lane in a roundabout and there are traffic lane arrows applying to the lane, the driver must:

- (a) if the arrows indicate a single direction, drive in or leave the roundabout in that direction; or
- (b) if the arrows indicate 2 or more directions, drive in or leave the roundabout in one of those directions.

### ***Giving a change of direction signal when changing marked lanes or lines of traffic in a roundabout***

A driver driving in a roundabout must:

- (a) give a left change of direction signal before the driver changes marked lanes to the left, or enters a line of traffic to the left, in the roundabout;
- (b) give a right change of direction signal before the driver changes marked lanes to the right, or enters a line of traffic to the right, in the roundabout.

### ***Giving a left change of direction signal when leaving a roundabout***

If practicable, a driver driving in a roundabout must give a left change of direction signal when leaving the roundabout.

The driver must stop giving the change of direction signal as soon as the driver has left the roundabout.

This rule does not apply to a driver if the driver's vehicle is not fitted with direction indicator lights.

### ***Giving way by the rider of a bicycle or animal to a vehicle leaving a roundabout***

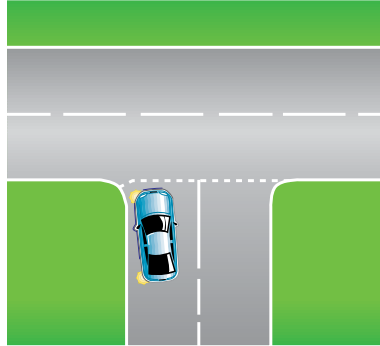
The rider of a bicycle or animal who is riding in the far left marked lane of a roundabout with two or more marked lanes, or the far left line of traffic in a roundabout with two or more lines of traffic, must give way to any vehicle leaving the roundabout.

## **Turning**

---

### **Left-hand turns**

Plan turns well in advance.



Left turns must be made from the extreme left of the road.

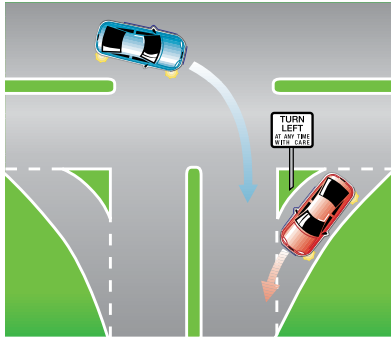
Move to the left in good time before reaching the intersection. Do not forget to use your mirror, look over your shoulder and signal your intention before moving over.

If lanes are marked, use the left lane and, if practicable, turn into the left lane.

You may make left turns from lanes which have a left-turn arrow painted on the road. Remember, you must keep in the equivalent lane as you make your turn.

When turning left from a road that is not a multi-lane road, or from a one way street, you must approach and enter the intersection to the left of any vehicle travelling in the same direction, and as near as practicable to the left edge of the road you are leaving.

### Left turn slip lane



Left-hand turns using slip lanes.

A driver turning left through a slip lane with or without a Turn Left With Care sign **MUST** give way to any vehicle on the road the driver is entering or any vehicle turning right at the intersection into the road the driver is entering, or any pedestrian on the slip lane.

All drivers need to exercise caution when entering and exiting slip lanes. In particular, watch out for pedestrians and cyclists at such intersections.

### What is a Slip Lane?

A slip lane is a branch of a road for the use of vehicles turning left at an intersection or T-intersection.

Figures 1 & 2. Shaded areas in diagrams are slip lanes and traffic flow direction is indicated by the arrows.

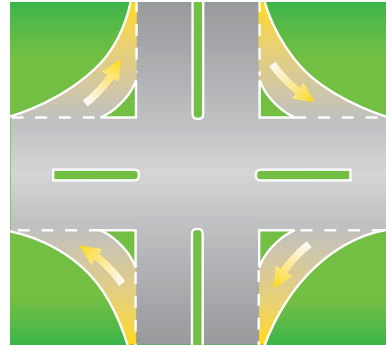


Fig. 1. Slip lanes at an intersection

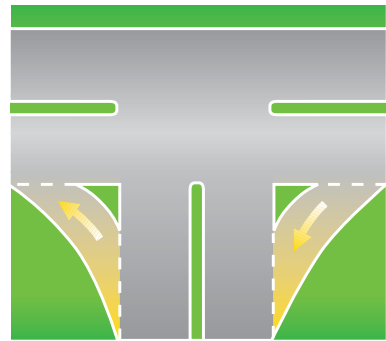


Fig. 2 – Slip lane at a T-intersection

### Painted Islands and Concrete Islands

Traffic islands used to shape a slip lane may take the form of a raised construction, generally of concrete, or painted lines (chevrons) on the road surface.

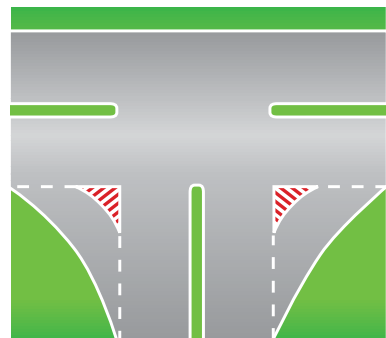


Fig. 3 – Traffic islands

Slip lanes should be regarded as terminating roads.

In the ACT, a slip lane should be regarded in the same way as the terminating road of a T-intersection, ie a driver in a slip lane or on a terminating road of a T-intersection **MUST** give way.

A driver **MUST** give way to all traffic when exiting a slip lane whether or not there are signs such as “Turn Left At Any Time With Care”, “Give Way”, or traffic lights.

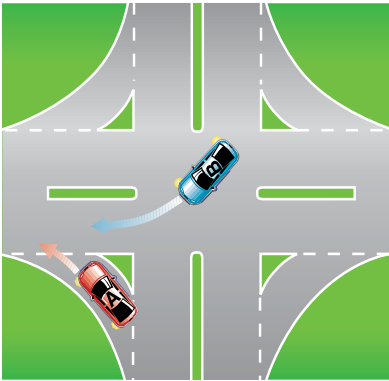


Fig. 4 – Vehicle A (red) gives way to vehicle B

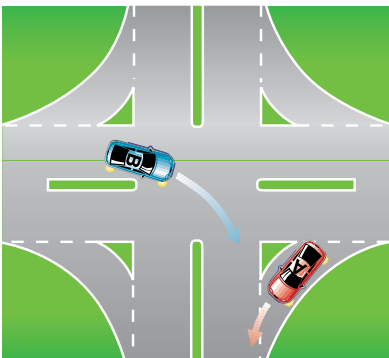


Fig. 5 – Vehicle A gives way to vehicle B

### EXCEPTION TO THE RULE: Slip lane with its own traffic lane

The give way rule does not apply when a slip lane leads into its own traffic lane.

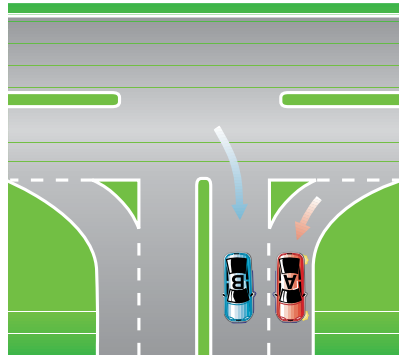


Fig. 6 – Vehicle A does not have to give way to vehicle B

Many drivers run into the rear of the vehicle ahead while driving through a slip lane. This happens when the driver in front slows or stops to check for vehicles approaching from the right.

### REMEMBER:

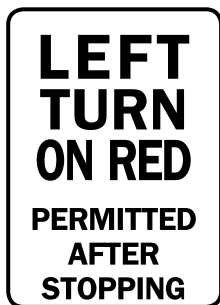
In the ACT, motorists exiting a slip lane **MUST** give way to **ALL** other traffic including PEDESTRIANS on the slip lane.

**DO NOT** cross ANY unbroken line (or lines) when exiting the slip lane to enter the new street, or to merge with other vehicles. Cross only the broken lines.

**NOTE:** When turning left **ALWAYS** use your indicators.

### Left Turn on Red Light

At selected intersections that are controlled by traffic lights, you may be also faced by a sign saying:



Left Turn On Red  
Permitted After  
Stopping sign

This sign permits you to turn left even if the traffic light facing you is red.

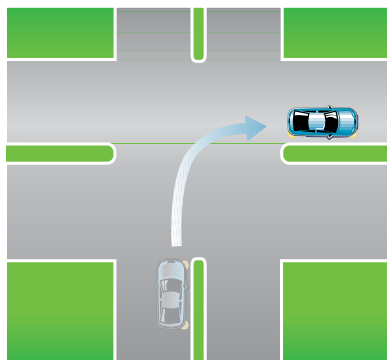
But remember:

- you **MUST** first stop your vehicle completely;
- you **MUST** give way to all other traffic;
- you **MUST** give way to pedestrians;
- it **MUST** be safe to then proceed; and
- you **CAN** only do so where a sign is displayed.

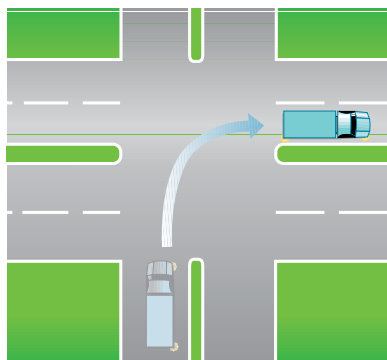
### Penalties

A driver failing to stop before turning, or stopping and then turning in an unsafe manner, is liable to a fine and Demerit Points.

### Right-hand turns



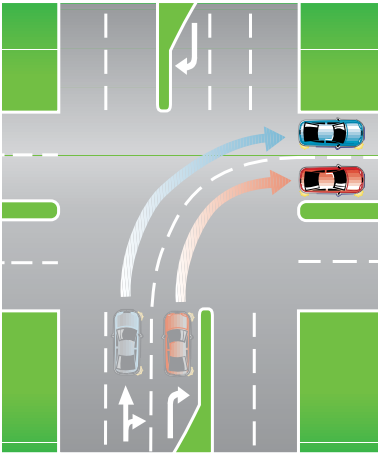
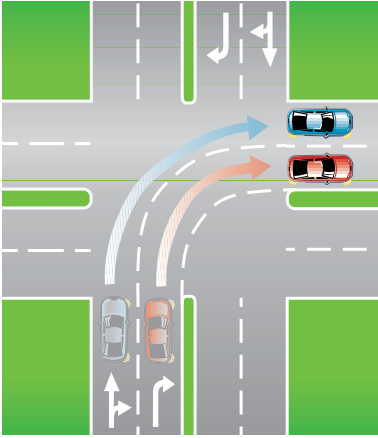
Unmarked lanes



Laned roads

If lanes are not marked, make your turn from as close as possible to the centre line.

Sometimes special lanes are marked for the use of right-turning traffic.



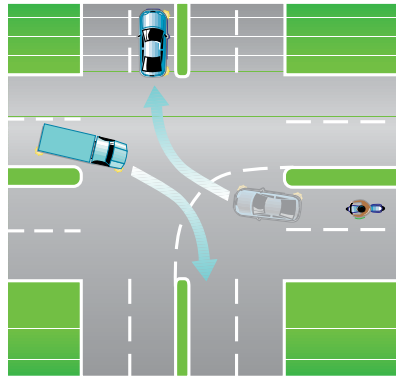
Right turns from more than one lane.

Directional arrows on the road may show that right turns may also be made from other lanes.

When right turns are allowed from more than one lane, you must keep in the equivalent lane as you turn from one road into another.

When turning from a road that is not a multi-lane road, you must approach and enter the intersection from as near as practicable to, but to the left of, the middle of the road. When turning right from a one way road, you must approach and enter the intersection from as near as practicable to the right edge of the road that you are leaving.

**NOTE: When turning right ALWAYS use your indicators.**



Right turns with opposing vehicles

Opposing vehicles at intersections should turn with the other vehicle passing/turning on their left.

## Do Not Overtake Turning Vehicle



Do Not Overtake  
Turning Vehicle sign

Motorists should remember that trucks and other long vehicles (more than 7.5 metres in length) which show this sign may have to use more than one lane when turning. Be prepared to give long vehicles such as trucks and buses room to turn.

### *Motorcycles and bicycles*

Take care not to squeeze these smaller vehicles into the kerb.

## U-Turns and Three Point Turns

These are the basic methods of turning a vehicle to face in the opposite direction. When making a U-Turn or three point turn you must give way to all other traffic.

### *U-turns*

The following U-turn rules and examples have been taken directly from the Australian Road Rules and are recognised nationally.

### *Beginning a U-turn*

A driver must not begin a U-turn unless:

- (a) the driver has a clear view of any approaching traffic; and

- (b) the driver can safely make the U-turn without unreasonably obstructing the free movement of traffic.

### *Giving way when making a U-turn*

A driver making a U-turn must give way to all vehicles and pedestrians.

### *Making a U-turn contrary to a no U-turn sign*

A driver must not make a U-turn at a break in a dividing strip on a road if there is a no U-turn sign at the break in the dividing strip.

A driver must not make a U-turn on a length of road to which a no U-turn sign applies.

A no U-turn sign on a road (except a no U-turn sign at an intersection or at a break in a dividing strip) applies to the length of road beginning at the sign and ending at the nearer of the following:

- (i) the next intersection on the road;
- (ii) if the road ends at a T-intersection or dead end — the end of the road.

### *No U-turn signs*



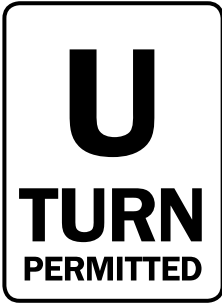
No U-turn sign  
Standard sign



No U-turn sign  
Variable illuminated message sign

### *Making a U-turn at an intersection with traffic lights*

A driver must not make a U-turn at an intersection with traffic lights unless there is a U-turn permitted sign at the intersection.



U-turn permitted sign

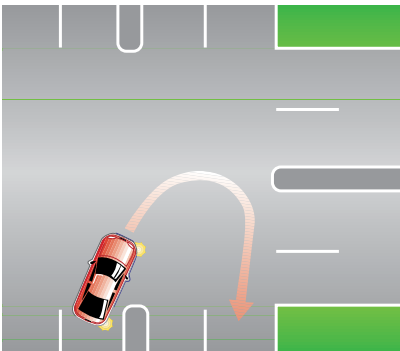
***Making a U-turn at an intersection without traffic lights***

A driver must not make a U-turn at an intersection without traffic lights, if there is a no U-turn sign at the intersection.

***Starting a U-turn at an intersection***

A driver making a U-turn at an intersection must start the U-turn:

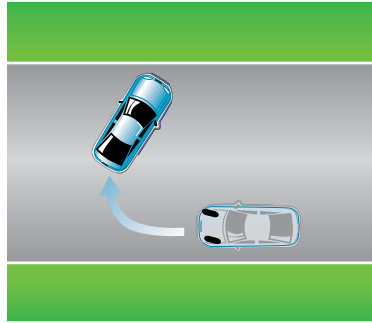
- (a) if the road where the driver is turning has a dividing line or median strip — from the marked lane nearest, or as near as practicable, to the dividing line or median strip; or
- (b) in any other case — from the left of the centre of the road.



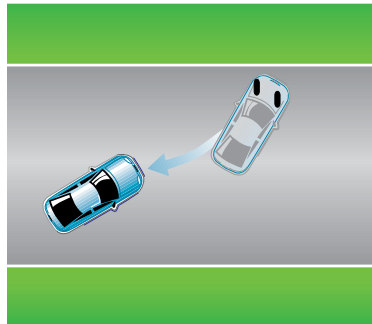
Starting a U-turn on a road with a median strip

**Three point turns**

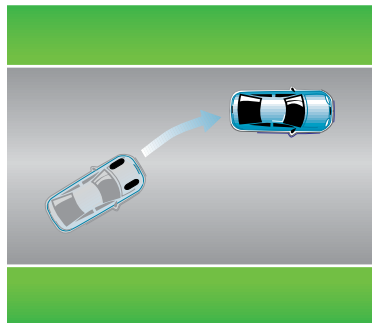
Three point turns are completed in three movements using forward and reverse gear.



First move



Second move



Third move

# Crossings

## Pedestrian crossings



Pedestrian crossings are marked by white stripes on the roadway and special signs.

Motorists must give way to pedestrians on a marked pedestrian crossing, if there is a reasonable possibility of a collision.

**Note:** It should be noted that some crossings in the ACT have now been made more distinguishable by the implementation of flashing amber lights. These crossings have the same regulations as crossings without lights and should be negotiated in the same way.

**DO NOT overtake a stationary vehicle at a pedestrian crossing.**

## Wombat crossings



Wombat crossings are used where there is a need to slow the speed of vehicles to

make the crossing safer for use by children or the elderly and slow pedestrians.

These crossings are marked across a raised speed hump type section of street, and are clearly signposted. Motorists **MUST** give way to pedestrians on a marked wombat pedestrian crossing if there is a reasonable possibility of a collision.

**DO NOT overtake a stationary vehicle at a wombat pedestrian crossing.**

## School crossings



School crossings are marked by white lines on the roadway, and by red and white striped posts on each kerb.

School crossings are operative only when a traffic sign or flag with the words 'School Crossing' or 'Children Crossing' is placed on or near the crossing.

Vehicles **MUST** stop at the white hold lines and remain stationary until the crossing is clear of all pedestrians.

**DO NOT overtake a stationary vehicle at a school pedestrian crossing.**

## Pedestrian refuge zone



Pedestrian refuge zones are designed to provide a safe area for pedestrians when crossing busy streets.

Pedestrian refuge zones are yellow and red with “Keep Left” printed on them.

They are located on refuge islands on school crossings within school zones, at shopping centres and in high traffic areas.

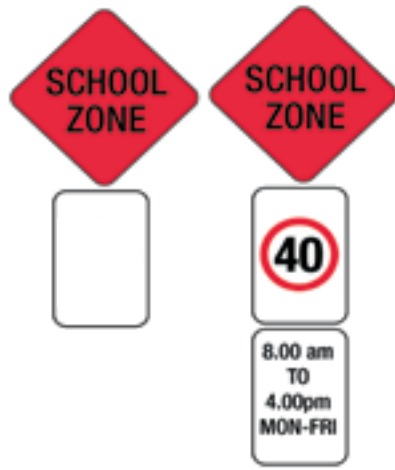
They are located in most suburbs, and additional pedestrian refuge zones will be installed throughout the ACT as the need is assessed.

When you see a yellow and red refuge zone, slow down and watch for children and other pedestrians crossing the road.

## School Zones

Areas around schools have been designated school zones. School zone signs erected near schools in the ACT are designed to be ‘closed’ or ‘open’. When the sign is ‘closed’ a normal default 50km/h speed limit applies unless signposted otherwise.

When the sign is ‘open’ a special speed limit of 40km/h applies at the times and days indicated on the sign.



‘Closed’

‘Open’

Lower part of sign swings up/down to open/close the zone.

## Level crossings

While there are few railway level crossings in the ACT, many ACT drivers are at risk of injury or death when travelling interstate. Therefore, it is important to be aware of the rules and regulations for level crossings.

A level crossing is an area where a road and a railway meet at substantially the same level, whether or not there is a level crossing sign on the road at all or any of the entrances to the area.

You must obey “Stop” and “Give Way” or any other warning sign at railway level crossings.



Level crossing signs

You must not enter a level crossing if:

- (a) warning lights (for example, twin red lights or rotating red lights) are operating or warning bells are ringing; or
- (b) a gate, boom or barrier at the crossing is closed or is opening or closing; or
- (c) a train is on or entering the crossing; or
- (d) a train approaching the crossing can be seen from the crossing, or is sounding a warning, and there would be a danger of a collision with the train if you entered the crossing; or
- (e) you cannot drive through the crossing because the crossing, or a road beyond the crossing, is blocked.

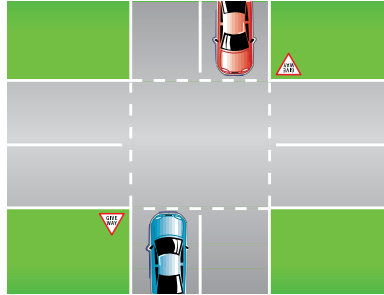
You must leave the level crossing as soon as you can do so safely.

# Parking

## Where not to park your vehicle:

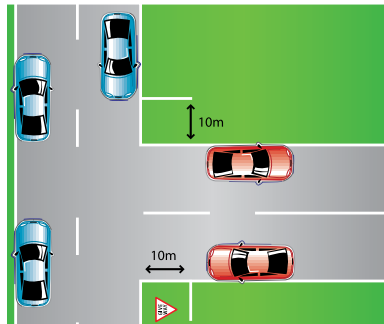
- on the right hand side of the road with your vehicle facing the oncoming traffic;
- in a “No Stopping” zone. “No Stopping” means a vehicle may NOT stop or park on the street for any purpose;
- in a “No Parking” zone, stopping is permitted. Where signs indicate “No Parking”, a vehicle may stop to pick up or set down passengers or goods only and must drive on within **two minutes** of stopping. The driver **MUST** remain with the vehicle at all times. A vehicle is declared unattended if a person is more than three metres away from the closest point of the vehicle;
- on a dividing strip, nature strip, painted island, footpath, bicycle path or shared path within a built up area;
- in a “Loading Zone”, unless you are loading/ or unloading goods to or from a vehicle specifically permitted to do so;
- across or within a passage, thoroughfare, entrance driveway or foot-crossing;
- double parked;
- in a “Taxi Zone”;
- upon a bridge, or 20 metres before or 10 metres after a pedestrian crossing or school crossing, and 10 metres before and 3 metres after a marked foot crossing;

- Within 20 metres of the nearest point of an intersection controlled by traffic lights, and 10 metres from an intersection without traffic lights;



Intersection

- parking is permitted within a T-intersection along the continuous side of the continuing road at the intersection as shown below, unless a parking sign indicates otherwise;



T Intersection

- at a bus stop, or on the road, within 20 metres before a sign on the road that indicates the bus stop, and 10 metres after the sign, unless you stop at a place on a length of road, or in an area, to which a parking control sign applies and you are permitted to stop at that place under the Australian Road Rules;

- so that any part of the vehicle overhangs any line marking or marked parking bay;
- anywhere other than a marked bay, if in a car-park with marked parking bays;
- on a crest or curve outside a built-up area unless:

your vehicle is visible for 100 metres to drivers approaching the vehicle and travelling in the direction of travel of traffic on the same side of the road as the vehicle; or

you stop at a place on a length of road, or in an area, to which a parking control sign applies and you are permitted to stop at that place under the Australian Road Rules.

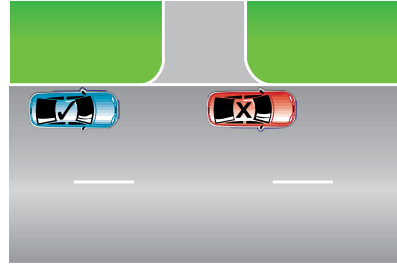
- within 1 metre of a fire hydrant.

You must not stop or park on a road in a position that obstructs access by vehicles or pedestrians to or from a footpath ramp or a similar way of access to a footpath, or a bicycle path or passageway unless:

- you are dropping off or picking up, passengers; or
- you stop in a parking bay and you are permitted to stop in the parking bay under the Australian Road Rules.

You must not stop on, or across, a driveway or other way of access for vehicles travelling to or from adjacent land unless:

- you are dropping off, or picking up, passengers; or
- you stop in a parking bay and you are permitted to stop in the parking bay under the Australian Road Rules.



Blocking a driveway

In the example, the vehicle marked with an 'X' is stopped in contravention of the rule above.

You must not stop on a road within three metres of a public post-box, unless you:

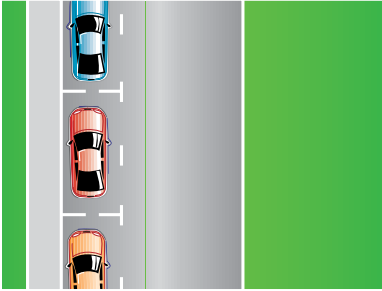
- are dropping off, or picking up, passengers; or
- stop at a place on a length of road, or in an area, to which a parking control sign applies and you are permitted to stop at that place under the Australian Road Rules.

## How and where to park

The rules relating to parking are set out in the Australian Road Rules.

Vehicles should always be parked parallel and close to the left-hand side of the street facing in the direction the vehicle would travel except when otherwise indicated by a traffic sign or road marking (ie angle parking, centre of the road parking).

### Parallel parking

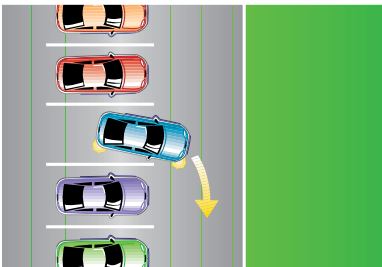


You **MUST** park:

- in-line with, and as close as practicable to, the kerb;
- entirely within any marked bays;
- at least one metre from any vehicle in front and behind.

The recommended distance from the kerb is 30 cms.

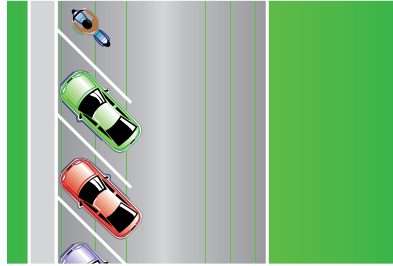
### Centre of road parking



Where parking is allowed along the centre of the road, marked bays are usually set out at right angles to the traffic.

You must drive out forwards, do **NOT** reverse.

### Angle parking



You must angle park at the kerb if signs or marked bays indicate angle parking. You must always park at a 45 degree angle, unless a sign or line marking indicates otherwise.

### Goods Vehicles

Goods vehicles primarily designed to carry goods may park in loading zones for no longer than 30 minutes unless signposted otherwise, for the purpose of loading or unloading **ONLY**.

**NOTE:** Other vehicles may park in loading zones for the purpose of loading and unloading goods only if they have the appropriate parking permit affixed to the windscreen of the vehicle.

Vehicles not loading or unloading goods may be issued with a parking infringement notice.

### Heavy Vehicles

Vehicles used for commercial purposes with a GVM of more than 3.75 tonnes, longer than 6 metres or more than 2.6 metres high, are not permitted to park on residential land containing a multi-unit development.

There are additional restrictions on the parking of heavy vehicles in excess of 4.5 tonnes GVM in residential areas.

For further information, including information about parking heavy vehicles on residential leases, please contact Parking Operations on 6207 7200.

### Short stay parking

Four types of short stay parking are available in Canberra. These are meter, ticket, boom-gate and time limited parking.

#### Parking meters



You **MUST** immediately upon standing or parking next to an expired meter or when parking in a multi bay area, insert the correct and specified coins into the meter.

#### Ticket machines

PAY PARKING

MON-THURS	8:30am - 5:30pm
FRI	8:30am - 9:00pm
SAT	8:30am - 12 Noon

4 HOUR LIMIT

\$1.20 - 1ST HOUR
\$1.20 - 2ND HOUR
\$1.80 - 3RD HOUR
\$1.80 - 4TH HOUR

1 PARK VEHICLE  
2 PURCHASE TICKET  
3 DISPLAY ON DASHBOARD  
CARPARK NO

You must purchase a ticket immediately **AFTER** parking your vehicle and display the ticket face up on the dashboard of your vehicle.

#### Park 'n' ride



Park'n'ride allows you to park your vehicle for free in a Park'n'ride zone provided that you display a Park'n'ride permit.

Park'n'ride permits are available at ACTION bus interchanges. These packs are valid for one calendar month only.

A Park'n'ride permit is required for zones in Woden, Belconnen and Tuggeranong.

#### 3-for-FREE parking



Free parking in Civic, Belconnen, Woden and Tuggeranong for cars carrying at least three people, arriving between 7.30am and 9.00am (10am in Tuggeranong), Monday to Friday.

For more information please telephone 6207 7200.

### Disability parking sign



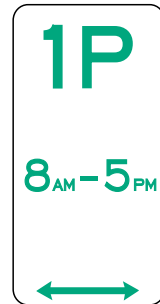
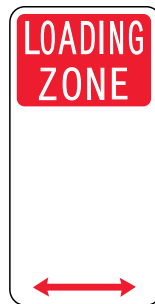
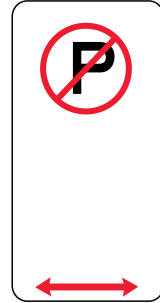
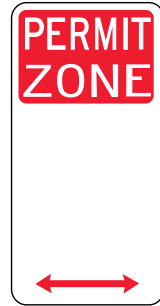
Throughout Canberra, parking spaces are reserved for people with a mobility disability who display a Disability Parking Permit on their windscreens. These spaces are conveniently located at all major and suburban shopping centres, hospitals, health and community centres, business areas and places of interest.

For further information about Parking Permits, telephone 13 22 81 or write to:

Manager  
Road User Services  
PO Box 582  
DICKSON ACT 2602, or

[www.rego.act.gov.au/parking](http://www.rego.act.gov.au/parking) click on the links to: *Special Parking Permits* and *Australian Disability Parking Permits*.

### Some examples of parking signs



## Parking regulations

Under the ACT Road Transport legislation, the registered operator of a motor vehicle is responsible for parking offences incurred by that motor vehicle.

However, if the registered operator is not the actual offender, he or she will not be held liable if:

- the registered operator supplies a Statutory Declaration stating the name and address of the person driving at the time of the offence; or
- the registered operator supplies documented proof that at the time of the alleged offence, the vehicle was stolen or illegally taken or used.

**NOTE: If you sell a vehicle you must provide a notice of disposal to the RTA which includes the name and address of the new operator. If you fail to do this you remain liable for any outstanding parking infringements.**

**Failure to pay a parking infringement penalty within the prescribed period will result in suspension of your ACT licence and/or registration, or right to drive in the ACT.**

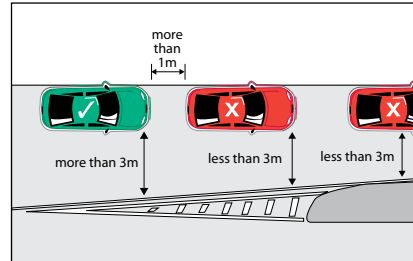
## How to avoid Parking Infringement Notices (PINS)

ALWAYS read parking sign carefully and make sure you understand the sign.

Parking signs apply 24 hours a day and 7 days a week, unless restricted hours are stated on the sign.

Look for the signs on upright poles or on walls adjacent to the parking surface.

## Parking – minimum distances from other vehicles and dividing strip.



If a road has a continuous dividing line or dividing strip you must position the vehicle at least 3 metres from any dividing line or dividing strip, unless information on a parking control sign indicates otherwise.

If the road does not have a continuous dividing line or dividing strip, you must position the vehicle so there is at least 3 metres of road alongside the vehicle that is clear for other vehicles to pass, unless information on a parking control sign indicates otherwise.

## Parking infringement

### The Rules

If you don't pay your parking fines on time, you will lose your right to drive.

You have just **28 days** to pay your parking fine from the day the ticket was issued.

If you don't pay within **28 days** you have **28 more days**, but have to pay an administration charge, as well as your fine.

If you still don't pay, your **licence or registration** will be **suspended**. You will have to pay your fine and the administration charge, before you can drive, or before the vehicle may be used again.

### How to keep on the right side of the law

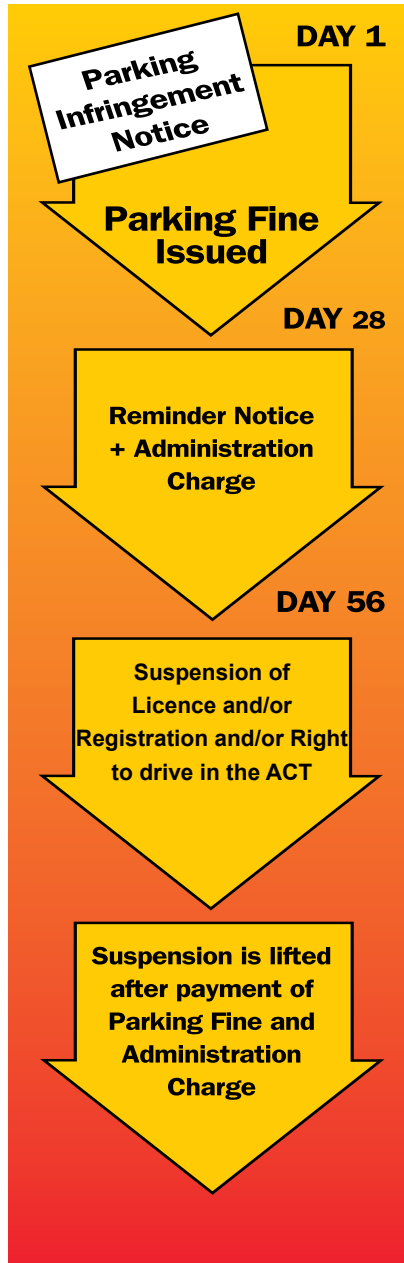
Best of all, park according to the rules and don't get an Infringement Notice.

If you do get an Infringement Notice, pay it within 28 days to avoid the extra administration charge.

If you are paying by mail, please allow enough time for the payment to be received by the due date. Late payments will attract the extra administration charge.

If you do have to pay the extra administration charge, pay it (and the fine too if that isn't already paid) within 28 days.

**WARNING:** You risk serious traffic offences, if you are found to be driving a vehicle with suspended registration or driving while your licence is suspended.



## Safe Vehicles

